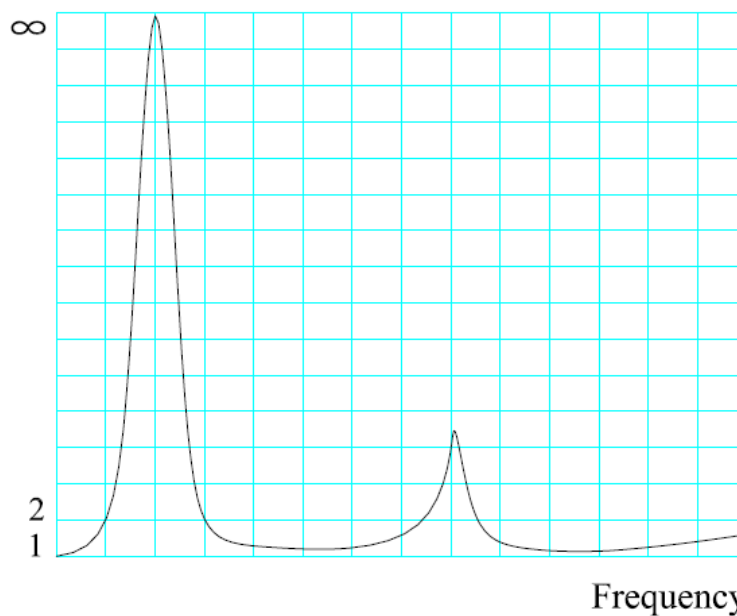


## Innovative Technology Eliminates Sudden Big Reflection

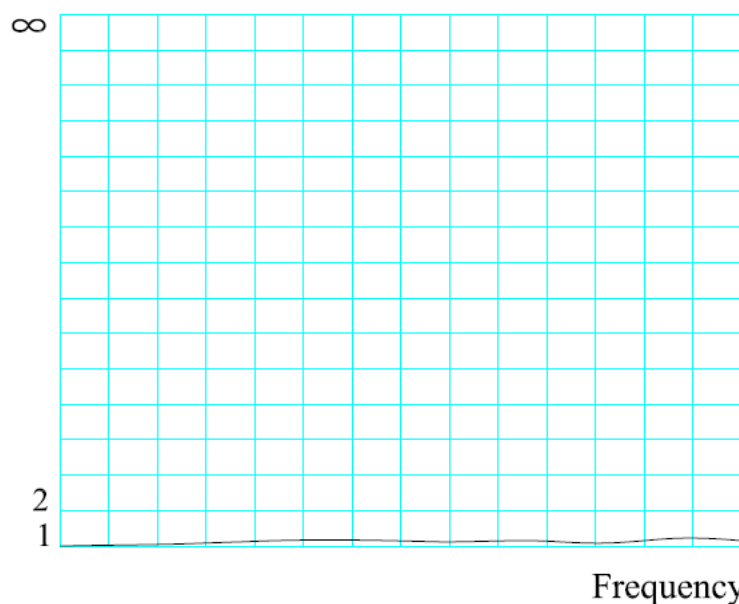
Yantel's wide frequency range, miniature variable attenuator adopts an innovative technology, which eliminates sudden big reflection in attenuators when attenuation is being adjusted, preventing the preliminary RF circuits (such as preliminary power amplifier) from being burnt, and keeping system stable.

Yantel's attenuator can be adjusted in power-on status as no sudden change of reflection exist.

But for the traditional variable attenuator, the power supply must be switched off before adjusting attenuation. Since preliminary amplifier would be burnt as sudden change of reflection occurs when adjusting attenuation in power-on status. This problem is very dangerous for the system and inconvenient for operation.



Sudden big reflection occurs in the traditional variable attenuator



No Sudden big reflection occurs in Yantel's variable attenuator