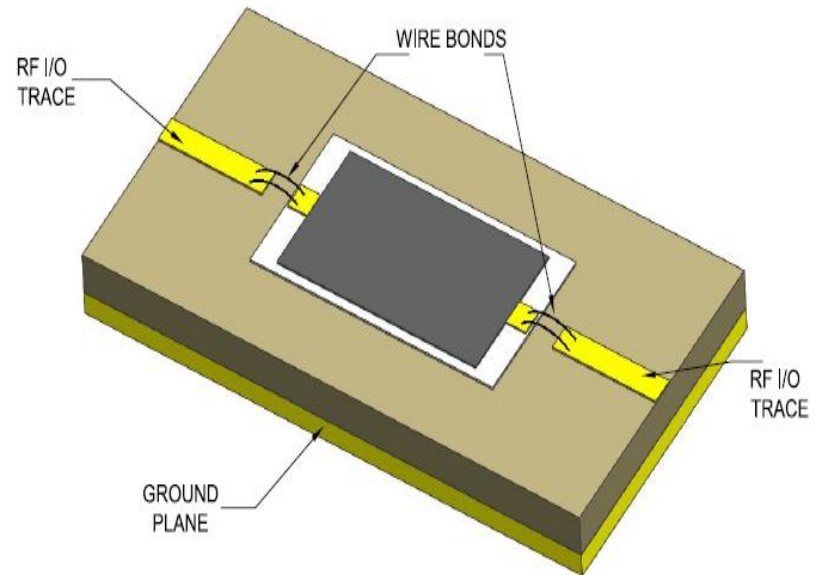
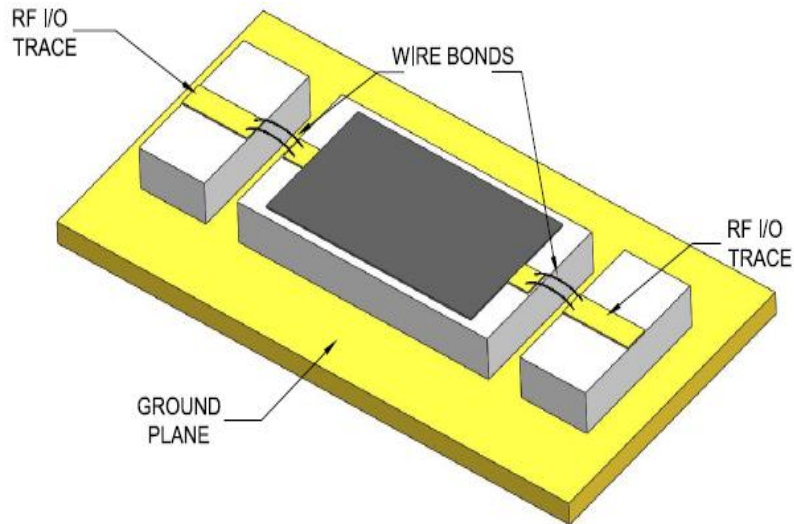


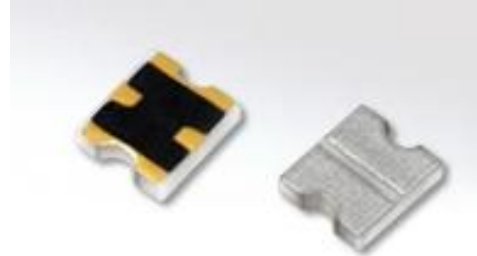
KTCA Series Application Diagram :

- Frequency: 16 to 36GHz
- Power: 200mW
- Temperature: -55°C to 150°C
- Size: 3.05*1.65*0.38mm
- Installation :
 - Signal port (wire bonding)
 - Backside ground (soldering / conductive silicone)



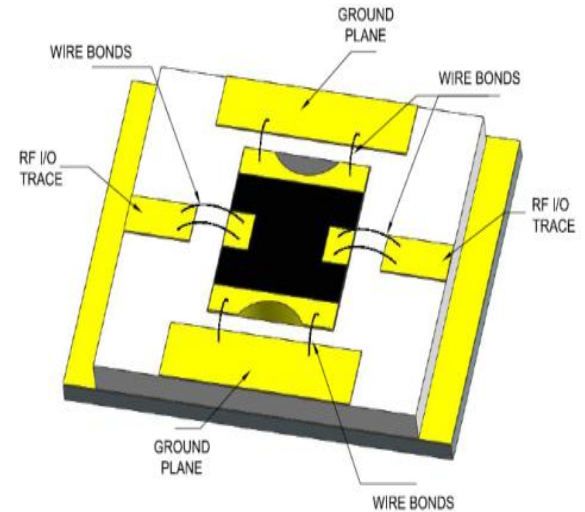
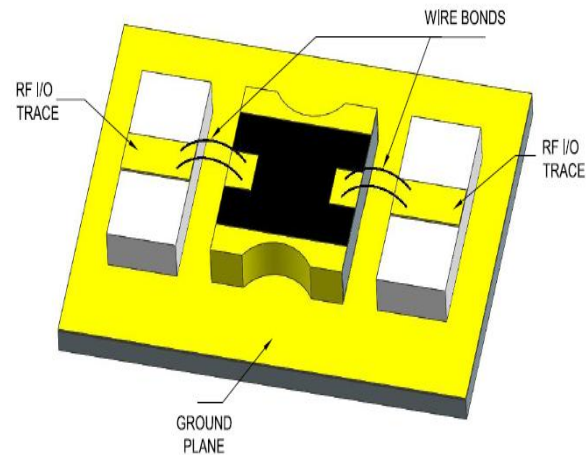
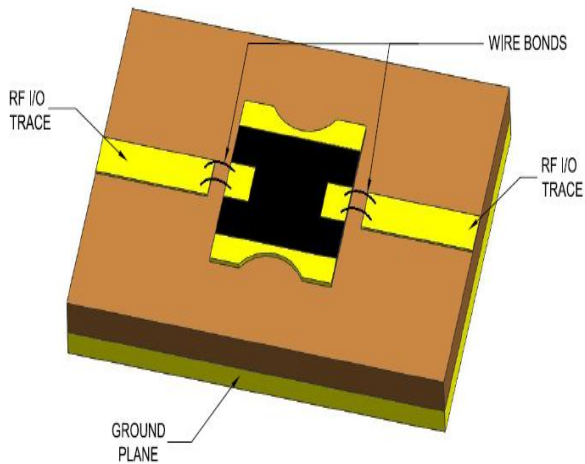
WTCA(Gold) Series Application Diagram :

- Frequency: DC to 20GHz
- Power: 200mW
- Temperature: -55°C to 150°C
- Size:1.52*1.78*0.38mm



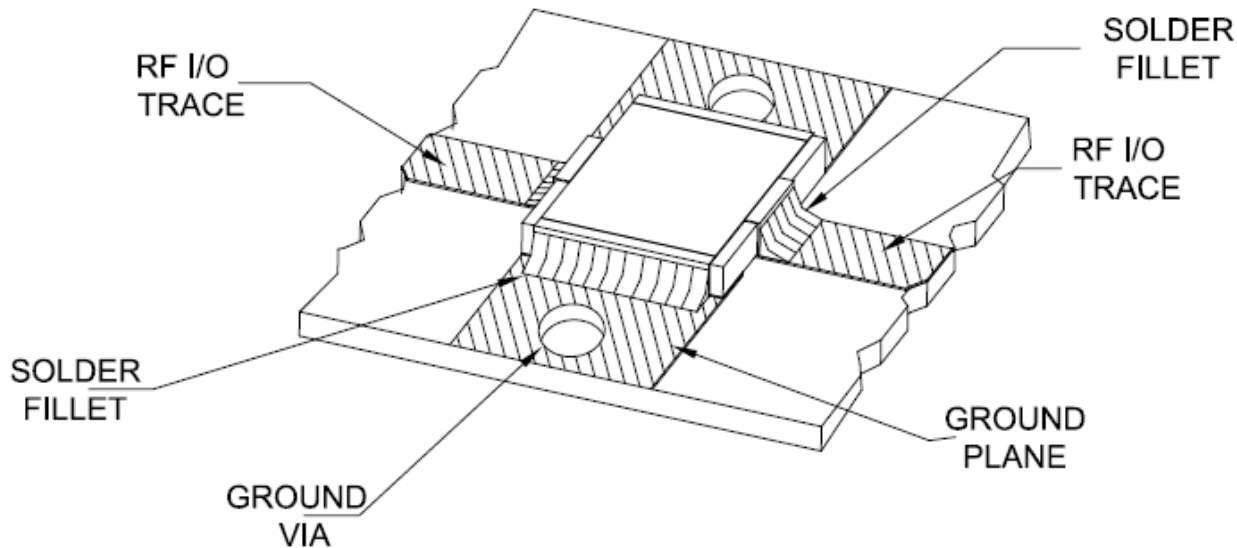
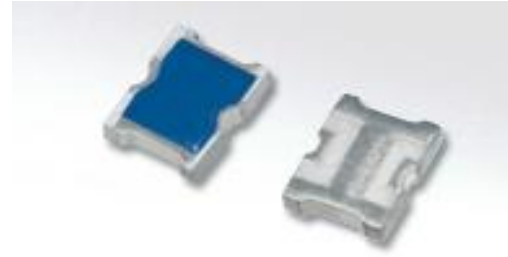
Signal Port: wire bonding

Ground : backside (soldering/conductive silicone); front side (wire bonding)



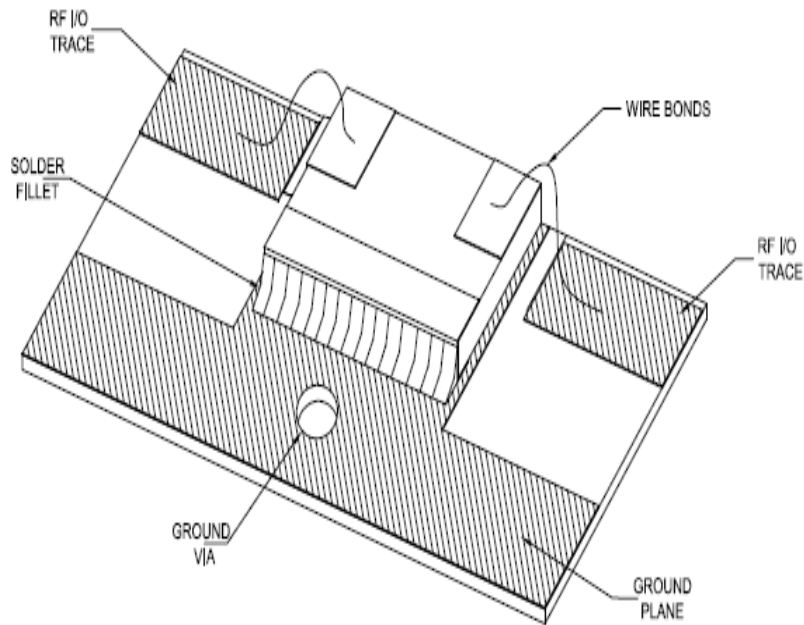
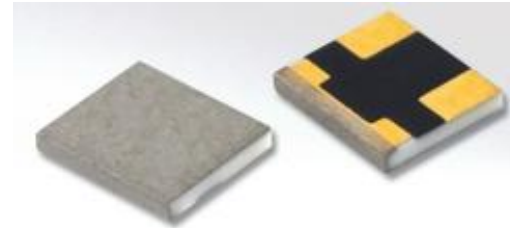
WTCA(Tin) Series Application Diagram :

- Frequency: DC to 20GHz
- Power: 200mW
- Temperature: -55°C to 150°C
- Size: 1.52*1.91*0.38mm
- Installation:
 - Signal port (soldering)
 - Ground Terminal:
 - Backside (soldering or conductive silicone)
 - Lateral side and front side(soldering)

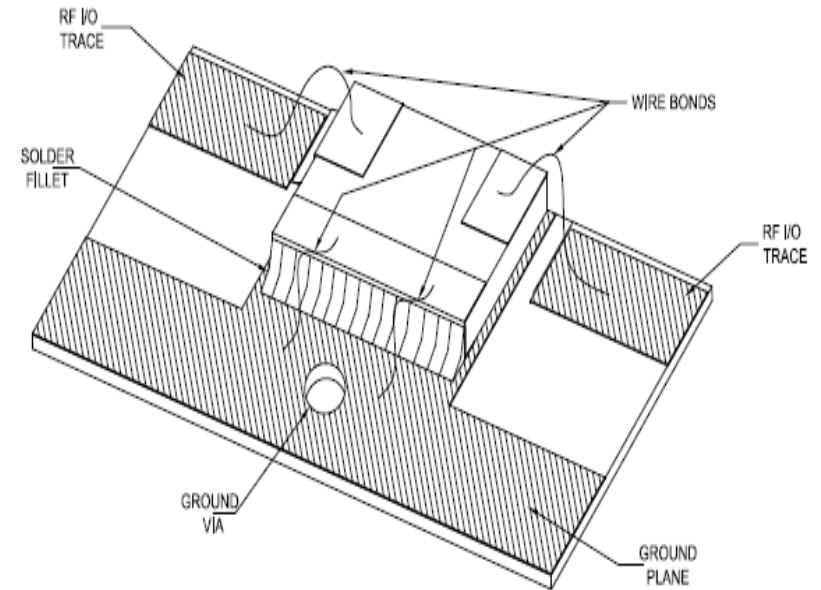


HTCA(WB1) Series Application Diagram :

- Frequency: DC to 12.4GHz
- Power: 200mW
- Temperature: -55°C to 150°C
- Size: 1.52*1.91*0.28mm



Signal Port(wire bonding)
Ground Terminal:
Backside (soldering or conductive silicone)
Lateral side (soldering)



Signal Port (wire bonding)
Ground Terminal:
Backside (soldering or conductive silicone)
Lateral side (soldering)
Front side(wire bonding)

HTCA(tin terminals-W3) Series Application Diagram :

- Frequency: DC to 12.4GHz
- Power: 200mW
- Temperature: -55°C to 150°C
- Size: 1.52*1.91*0.28mm
- Installation: all terminals (soldering)

