

Data Sheet

FAC4303

50Ω Up to 2W DC to 32GHz



Features

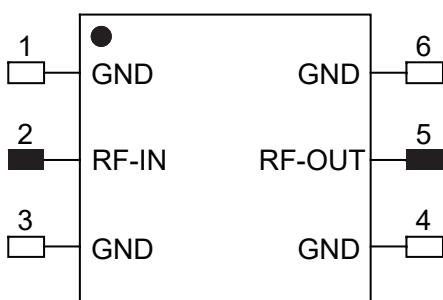
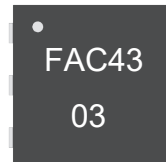
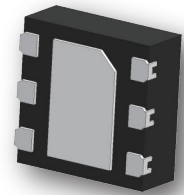
- Small Size (2×2mm DFN package)
- Super Wide bandwidth,DC-32GHz
- Excellent VSWR,1.3:1 typ.
- High Power Handling,2W
- Operating Temperature:-40°C to 85°C

Typical Applications

- 5G
- Test and Measurement
- Radar
- Communication
- Defense

General Description

FAC4303 is absorptive fixed attenuator fabricated using highly reliable GaAs MMIC process. The model operates from DC to 32GHz.It achieves outstanding attenuation accuracy and flatness while maintains excellent VSWR throughout the entire band. The model can also handle input power up to 2W,which makes this model an ideal choice for a wide range of applications.



TOP VIEW

Notes:

- 1.This part has passed through 100% RF test.

Yantel Corporation

Add: No.308-322, 3F, Building 1, Juchuang Jingu Innovation Park, Wenyuan Road 35, Xili Street, Nanshan, Shenzhen, China
Tel: 86-755-8355-1886 Fax: 86-755-8355-2533

Data Sheet

FAC4303

50Ω Up to 2W DC to 32GHz

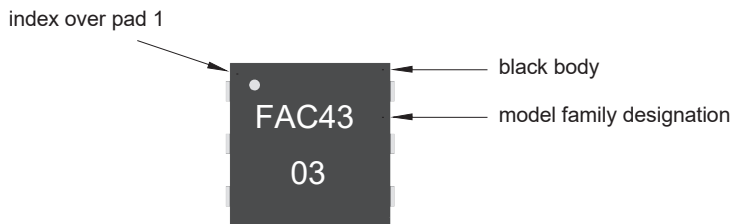


Key Features

| Feature | Advantages |
|---|---|
| Wideband operation, From DC to 32 GHz | Supports a wide array of applications including 5G, wireless infrastructure, microwave communications, satellite, defense and aerospace, medical broadband and optic applications |
| Small Size and simple to use (2 mm x 2 mm) | As a single chip solution, the FAC43 series occupies less board space than a lumped element approach, minimizes component count and ensures repeatable performance over wide frequency range. |
| Wide range of nominal attenuation values (0, 1, 2, 3, 4, 5, 6, 7, 8, 9, 10, 12, 15, 20 & 30) | Small increment offering enables circuit designer to change attenuation values without motherboard redesign making the FAC43 series ideal for select at test application. |
| MCLP™ Package | Low Inductance, repeatable transitions, excellent thermal path make the FAC43 series an ideal solution as an alternative to “do it yourself” lumped element-based approach. |

* IPD - Integrated Passive Device.

Product Marking

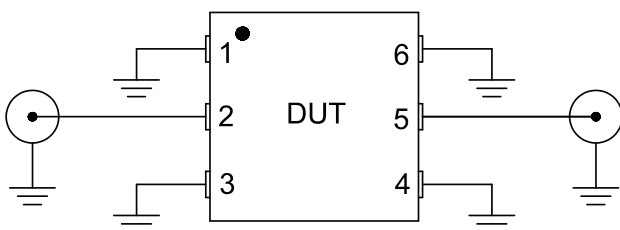


Marking may contain other features or characters for internal lot control

ESD Rating

Human Body Model (HBM): Class 2(Pass 2000V) per ANSI/ESD STM 5.1-2001

Characterization Test Circuit



Block diagram fo Test Circuit used for characterization.

Yantel Corporation

Add: No.308-322, 3F, Building 1, Juchuang Jingu Innovation Park, Wenyuan Road 35, Xili Street, Nanshan, Shenzhen, China
Tel: 86-755-8355-1886 Fax: 86-755-8355-2533

Rev A0

For detailed performance specs & shopping online see Yantel web site : www.yantel-corp.com

Data Sheet

FAC4303

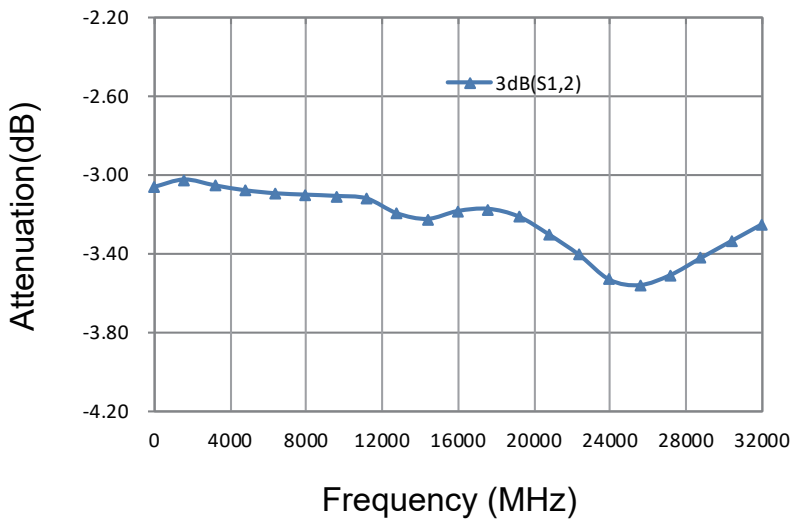
50Ω Up to 2W DC to 32GHz



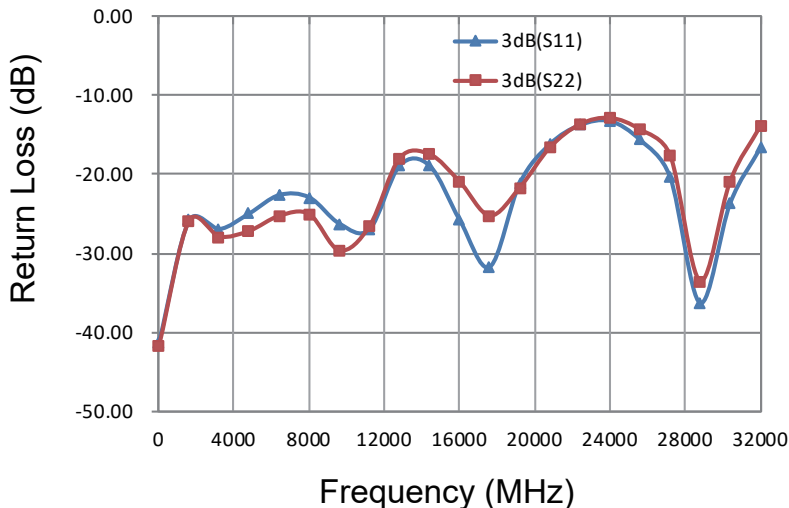
Electrical Specifications at 25° C

| Paramter | Freq.Range (GHz) | Min. | Typ. | Max. |
|------------------|------------------|------|------|------|
| Frequency Range | - | DC | - | 32 |
| Attenuation (dB) | DC-32 | 2.9 | 3.2 | 3.6 |
| Return Loss (dB) | DC-32 | 12 | 18 | - |

Test Curve



| Frequency (MHz) | S12 (dB) | Return Loss(dB) | |
|-----------------|----------|-----------------|--------|
| | | S11 | S22 |
| 0 | -3.06 | -41.25 | -41.74 |
| 1600 | -3.03 | -25.83 | -25.94 |
| 3200 | -3.06 | -26.95 | -27.95 |
| 4800 | -3.08 | -24.96 | -27.22 |
| 6400 | -3.10 | -22.62 | -25.30 |
| 8000 | -3.10 | -22.93 | -25.10 |
| 9600 | -3.11 | -26.26 | -29.70 |
| 11200 | -3.12 | -26.98 | -26.60 |
| 12800 | -3.20 | -18.91 | -17.97 |
| 14400 | -3.22 | -18.91 | -17.48 |
| 16000 | -3.18 | -25.80 | -20.97 |
| 17600 | -3.17 | -31.75 | -25.28 |
| 19200 | -3.21 | -21.12 | -21.71 |
| 20800 | -3.30 | -16.17 | -16.62 |
| 22400 | -3.40 | -13.76 | -13.67 |
| 24000 | -3.53 | -13.24 | -12.85 |
| 25600 | -3.56 | -15.62 | -14.32 |
| 27200 | -3.51 | -20.34 | -17.58 |
| 28800 | -3.42 | -36.32 | -33.57 |
| 30400 | -3.34 | -23.66 | -20.90 |
| 32000 | -3.25 | -16.68 | -13.92 |



Yantel Corporation

Add: No.308-322, 3F, Building 1, Juchuang Jingu Innovation Park, Wenyuan Road 35, Xili Street, Nanshan, Shenzhen, China
 Tel: 86-755-8355-1886 Fax: 86-755-8355-2533

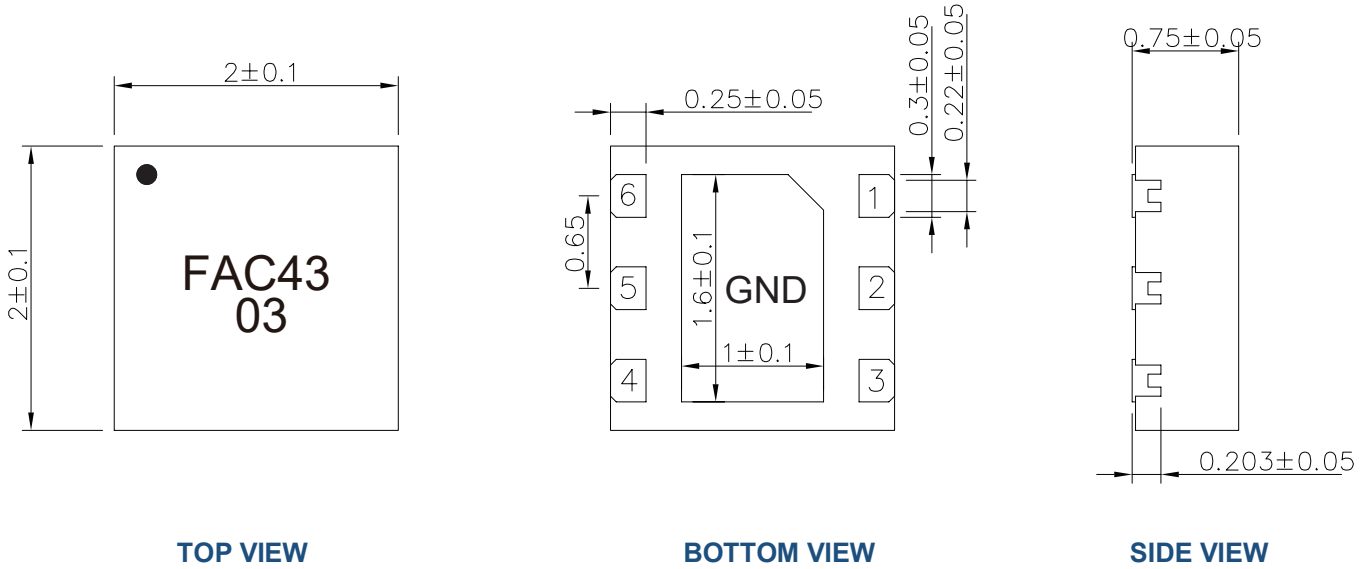
Data Sheet

FAC4303

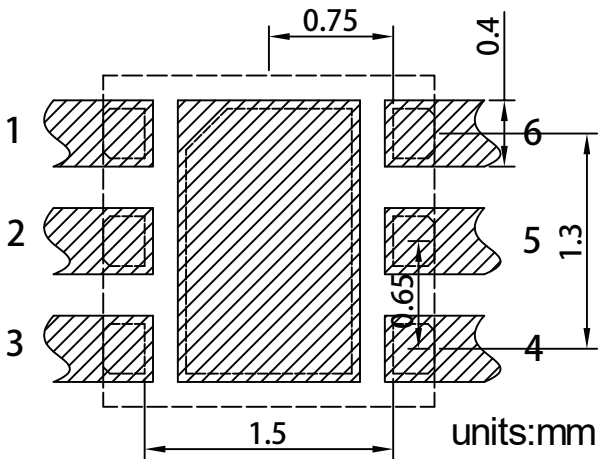
50Ω Up to 2W DC to 32GHz



Outline Drawing



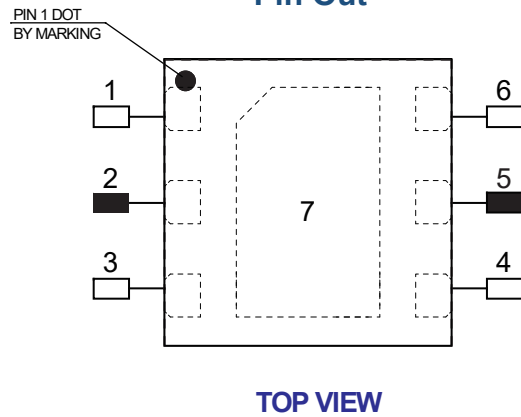
Land Pattern



Recommended Land Pattern Top View

Notes: All dimensions show in millimeters

Pin Out



Notes:

1. Require to add Capacitors of DC Blocker between Pins (with black color) and external circuit to prevent DC signal entry to guarantee parts normal work.
2. This part has passed through 100% RF test.

| Pin # | Connection |
|-------|------------|
| 1 | GND |
| 2 | IN |
| 3 | GND |
| 4 | GND |
| 5 | OUT |
| 6 | GND |
| 7 | GND |

Yantel Corporation

Add: No.308-322, 3F, Building 1, Juchuang Jingu Innovation Park, Wenyuan Road 35, Xili Street, Nanshan, Shenzhen, China
Tel: 86-755-8355-1886 Fax: 86-755-8355-2533