

### Fixed Attenuator

**DC to 6 GHz**  
**4 dB**  
**2 Watt**  
**SMA Stainless Steel Connectors**

### Features

- High attenuation accuracy
- Small VSWR
- Stainless Steel
- Ceramic chip
- Low cost-high performance

### Model No. Description

FATXXXXXX

X- Material: (no code)=Brass  
 (S)=Stainless steel  
 X- power handling: 2W or 5W.  
 X- connector type: SMA, N type or  
 SMB connector.  
 XX- attenuation: \*\*dB.  
 XX- 06 represents type number.

### Specifications

Frequency Range DC to 6 GHz  
 Attenuation 4 dB  
 Attenuation Accuracy ( Max. )  
 ± 0.35 dB over DC - 6 GHz

Nominal Impedance 50 Ohm  
 Average Power 2 Watt  
 Operating Temperature -55 to +125  
 Storage Temperature -55 to +125

#### Note:

**AVERAGE POWER:** 2W average to 25°C to 85°C ambient temperature,  
 derated linearly to 0.2W @ 125°C.

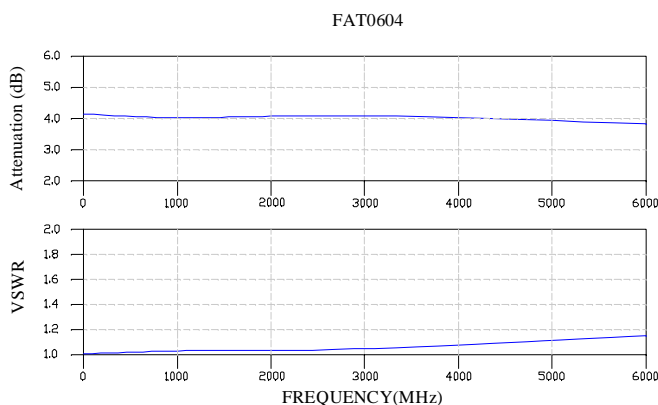
FREQ. RANGE (GHz)	Typical VSWR(:1)	Maximum VSWR(:1)
DC to 3	1.10	
3 to 4	1.15	
4 to 6	1.20	
DC to 6		1.30

### Material & Plating

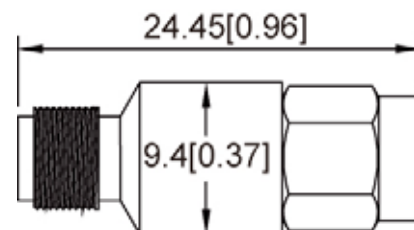
Parts	Material	Plating(Micro-inch)
Body & Nut	Stainless Steel	Passivated
Contact (female & male)	Beryllium Copper	Gold 30
Insulator	Teflon	

### Characteristic

For example the testing curves of FAT0604S2S



### Package Outlines



Package type: SMA

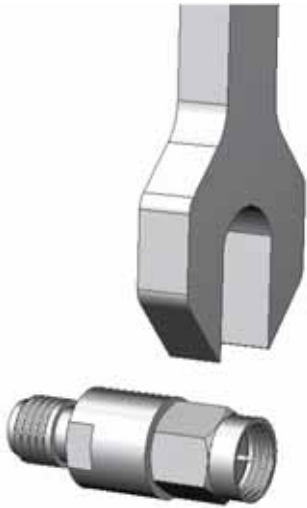
Note: all dimensions shown in mm & inch

#### Yantel Corporation

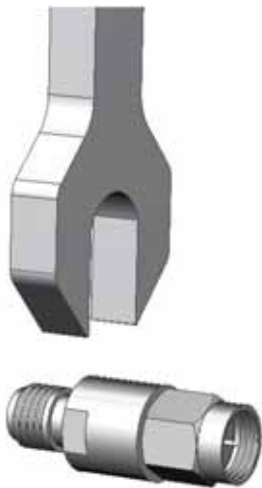
Add : 3F, Building 3, Southern District 2 of Zhongguan Honghualing Industrial Park, Xili, Nanshan, Shenzhen, China  
 Tel : 86-755-8355-1886 Fax : 86-755-8355-2533

For detailed performance specs & shopping online see Yantel web site : [www.yantel-corp.com](http://www.yantel-corp.com)

## Attention



Screw the male of connector to connect/disconnect.



Don't screw the slot of body to connect/disconnect.