

### Fixed Attenuator

- ◆ DC to 6 GHz
- ◆ 5 dB
- ◆ 2 Watt
- ◆ SMA Stainless Steel Connectors

### Features

- High attenuation accuracy
- Small VSWR
- Stainless Steel
- Ceramic chip
- Low cost-high performance

### Specifications

Frequency Range	DC to 6 GHz
Attenuation	5 dB
Attenuation Accuracy (Max.)	±0.35 dB over DC - 6 GHz
Nominal Impedance	50 Ohm
Average Power	2 Watt
Operating Temperature	-55 °C to +125°C
Storage Temperature	-55 °C to +125°C

### Model No. Description

FATXXXXXXXX

- X- Material: (no code)=Brass  
(S)=Stainless steel
- X- power handling: 2W or 5W.
- X- connector type: SMA, N type or SMB connector.
- XX- attenuation: \*\*dB.
- XX- 06 represents type number.

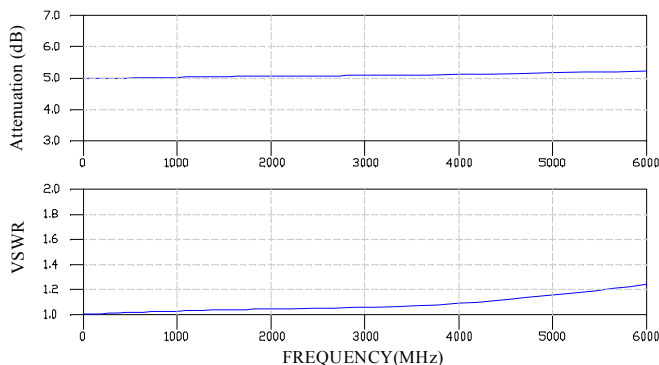
FREQ. RANGE (GHz)	Typical VSWR(:1)	Maximum VSWR(:1)
DC to 3	1.10	
3 to 4	1.15	
4 to 6	1.20	
DC to 6		1.30

### Material & Plating

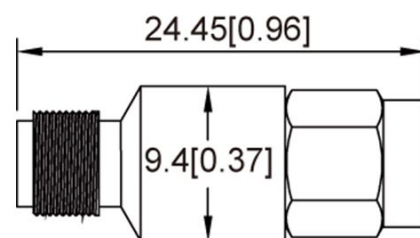
Parts	Material	Plating(Micro-inch)
Body & Nut	Stainless Steel	Passivated
Contact (female & male)	Beryllium Copper	Gold 30
Insulator	Teflon	

### Characteristic

For example the testing curves of FAT0605S2S



### Package Outlines



Package type: SMA

Note: all dimensions shown in mm & inch

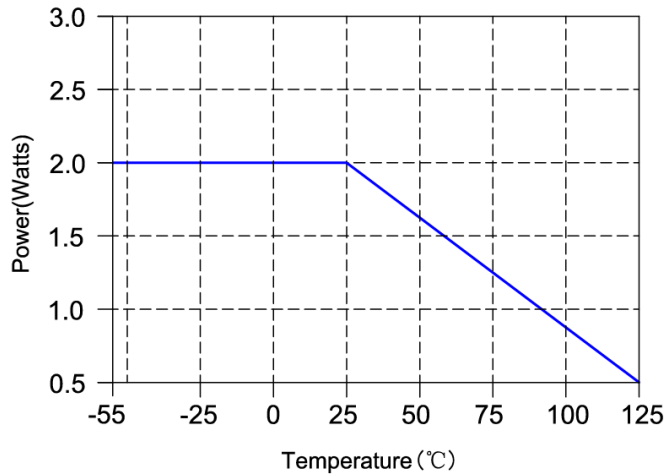
### Yantel Corporation

Add: 3F, Building 3, Southern District 2 of Zhongguan Honghualing Industrial Park, Xili, Nanshan, Shenzhen, China  
Tel: 86-755-8355-1886 Fax: 86-755-8355-2533

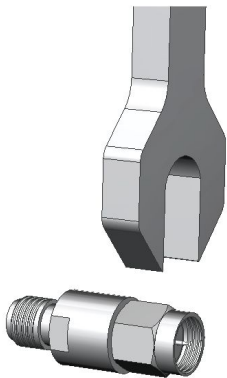
For detailed performance specs & shopping online see Yantel web site : [www.yantel-corp.com](http://www.yantel-corp.com)

**Note:**

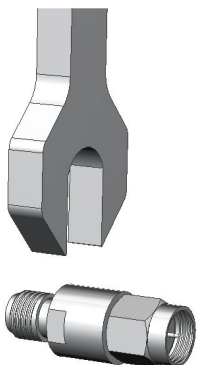
Average power at 25°C ambient, derate linearly to 0.5W at 125°C



## Attention



Screw the male of connector to connect/disconnect.



Don't screw the slot of body to connect/disconnect.