

Fixed Attenuator

DC to 6 GHz
9 dB
2 Watt
SMA Stainless Steel Connectors

Features

- High attenuation accuracy
- Small VSWR
- Stainless Steel
- Ceramic chip
- Low cost-high performance

Model No. Description

FATXXXXXX

X- Material: (no code)=Brass
 (S)=Stainless steel
 X- power handling: 2W or 5W.
 X- connector type: SMA, N type or
 SMB connector.
 XX- attenuation: **dB.
 XX- 06 represents type number.

Specifications

Frequency Range DC to 6 GHz
 Attenuation 9 dB
 Attenuation Accuracy (Max.)
 ± 0.60 dB over DC - 6 GHz

Nominal Impedance 50 Ohm
 Average Power 2 Watt
 Operating Temperature -55 to +125
 Storage Temperature -55 to +125

Note:

AVERAGE POWER: 2W average to 25°C to 85°C ambient temperature, derated linearly to 0.2W @ 125°C.

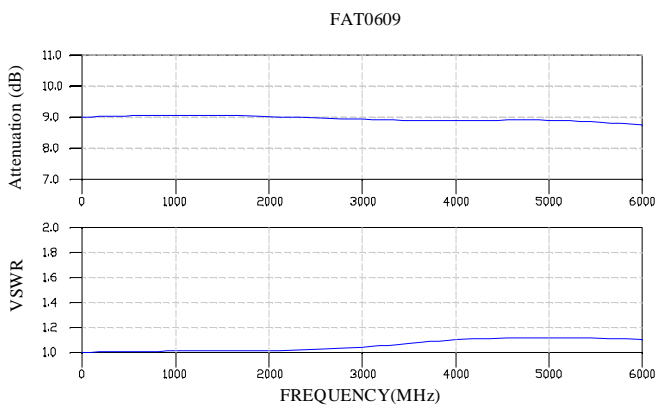
FREQ. RANGE (GHz)	Typical VSWR(:1)	Maximum VSWR(:1)
DC to 3	1.10	
3 to 4	1.15	
4 to 6	1.20	
DC to 6		1.30

Material & Plating

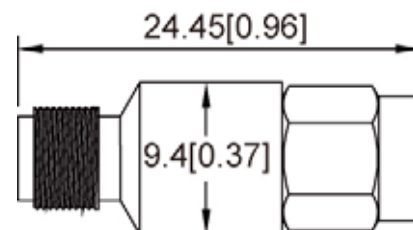
Parts	Material	Plating(Micro-inch)
Body & Nut	Stainless Steel	Passivated
Contact (female & male)	Beryllium Copper	Gold 30
Insulator	Teflon	

Characteristic

For example the testing curves of FAT0609S2S



Package Outlines



Package type: SMA

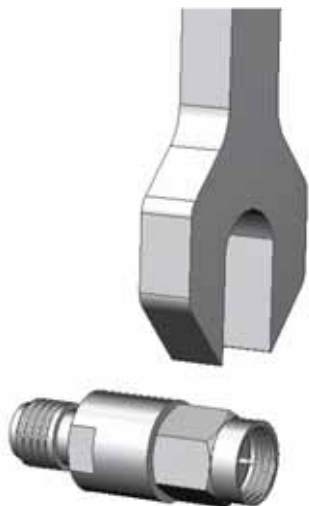
Note: all dimensions shown in mm & inch

Yantel Corporation

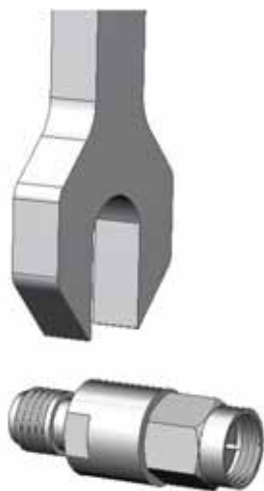
Add : 3F, Building 3, Southern District 2 of Zhongguan Honghualing Industrial Park, Xili, Nanshan, Shenzhen, China
 Tel : 86-755-8355-1886 Fax : 86-755-8355-2533

For detailed performance specs & shopping online see Yantel web site : www.yantel-corp.com

Attention



Screw the male of connector to connect/disconnect.



Don't screw the slot of body to connect/disconnect.