

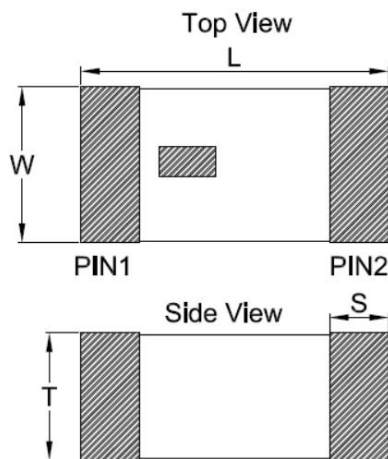
Features

- Compact size
- Omni-directional Radiation
- Tape & reel automatic mounting
- Reflow process compatible
- RoHS compliant

Specifications

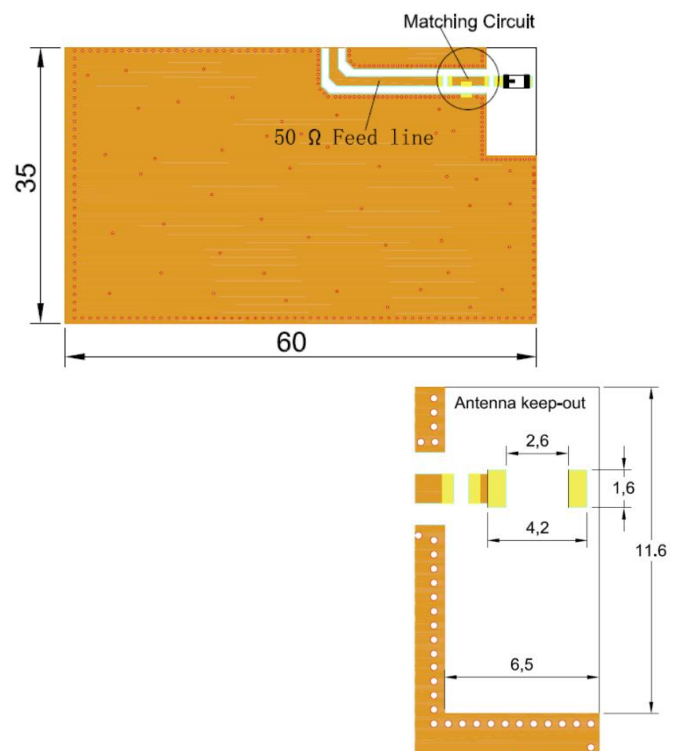
NO.	Parameter	SPC
1	Centre Frequency	7G
2	Bandwidth	1600MHz (TYP)
	Return Loss	10dB min
3	Peak Gain	3.8 dBi (Typ)
4	Average Gain	-1.3 dBi (Typ)
5	Input Impedance	50 Ω
6	Maximum Power (CW)	2W
7	Operating Temperature	-40°C~105°C
8	Q'ty/Reel (pcs)	3,000
19	Storage Temperature Range	+5 ~ +35 °C, Humidity 45~75%RH
10	Storage Period	12 months max

Construction & Dimensions (Unit: mm)



PIN	Connection	PIN	Connection
1	Input port	2	Output port
Symbol	Dimension(mm)	Symbol	Dimension(mm)
L	3.2±0.2	W	1.6±0.2
T	1.3±0.1	S	0.6±0.1

Reference design of evaluation board



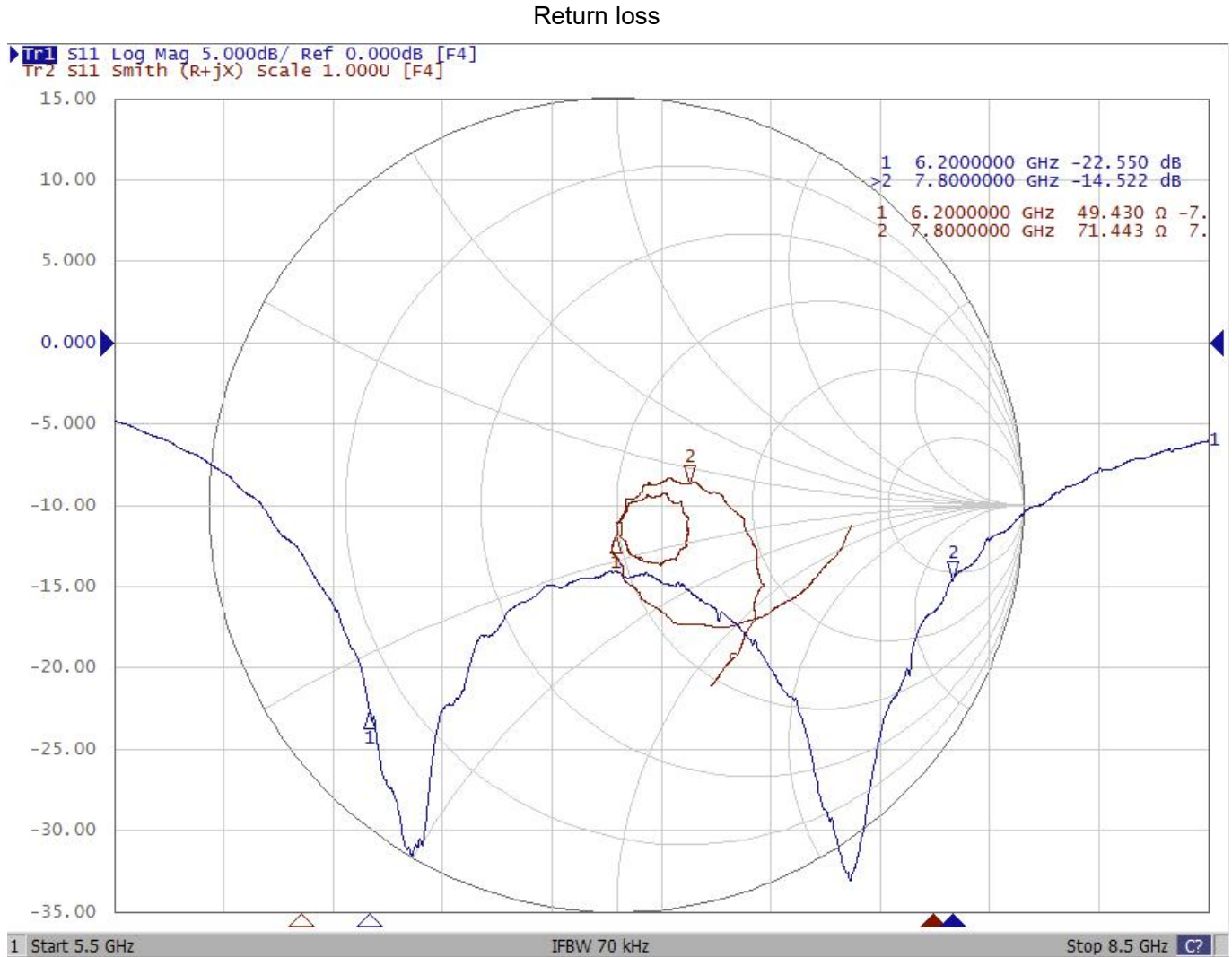
Yantel Corporation

Add: No.308-322,3F,Building 1,Juchuang Jingu Innovation Park,Wenyuan Road 35,Xili Street,Nanshan,Shenzhen,China

Tel: 86-755-8355-1886 Fax: 86-755-8355-2533

For detailed performance specs & shopping online see Yantel web site : www.yantel-corp.com

Typical Electrical Characteristics (T=25°C)



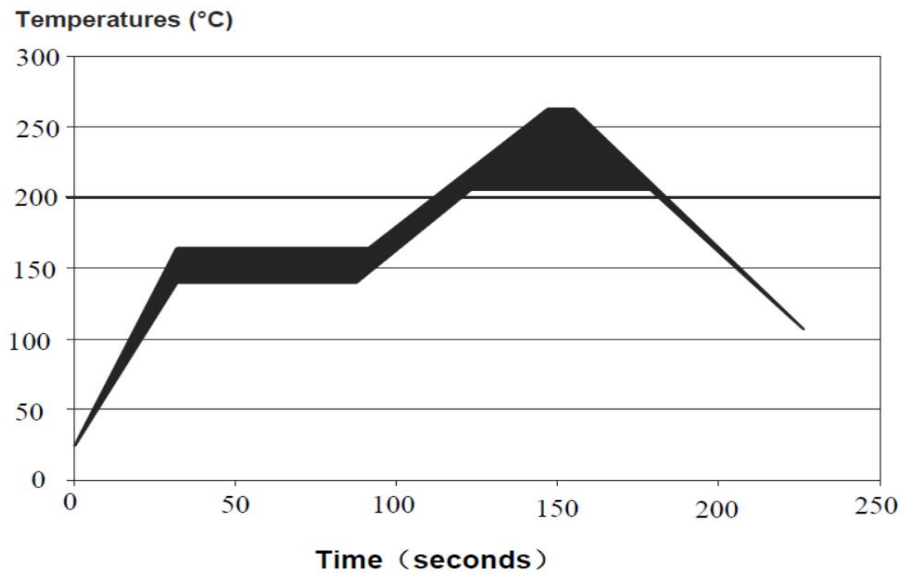
Yantel Corporation

Add: No.308-322,3F,Building 1,Juchuang Jingu Innovation Park,Wenyuan Road 35,Xili Street,Nanshan,Shenzhen,China

Tel: 86-755-8355-1886 Fax: 86-755-8355-2533

For detailed performance specs & shopping online see Yantel web site : www.yantel-corp.com

Solder Reflow Standard Conditioning



Storage Conditions

Temperature : +5 to +30 °C

Humidity : 20 to 70% RH

Term of storage : Within 12 months (After the delivery) *

Baking : Unnecessary

* After peeling off cover tape, do not keep exposing the products to the open air. For the products stored longer than 12 months, confirm their terminals and solderability before use.