

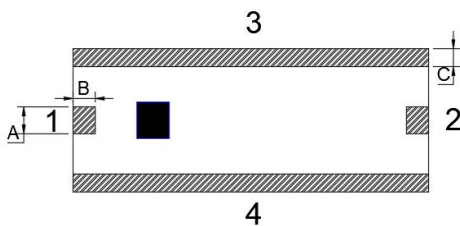
### Features

- Multilayer monolithic construction yields high reliability
- Low insertion loss and small size SMD chip design
- Can simplify your complex tuning and circuit design
- LTCC process

### Specifications

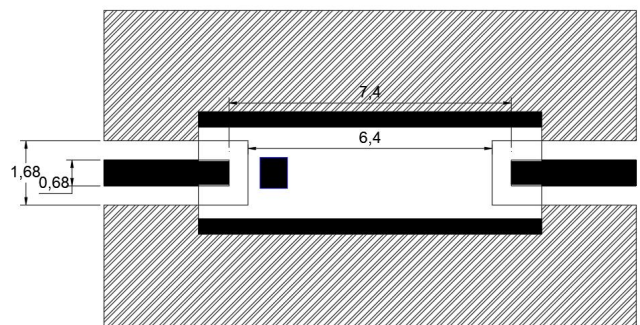
NO.	Parameter	SPEC	
1	Frequency (MHz)	608~678	
2	Insertion Loss (dB) @25°C	≤2.5	
3	VSWR(In BW)	≤2.0	
4	Attenuation(dB)	547MHz	≥18
		746MHz	≥28
5	In/Output Impedance (Ω)	50	
6	Power	5W	
<b>Operating &amp; Storage Condition (Component)</b>			
Operation Temperature Range: -40°C ~ +85°C			
Storage Temperature Range: -40°C~ +85°C			
<b>Storage Condition before Soldering (Included packaging material)</b>			
Storage Temperature Range: +5 ~ +40 °C			
Humidity: 30 to 70% relative humidity			

### Construction





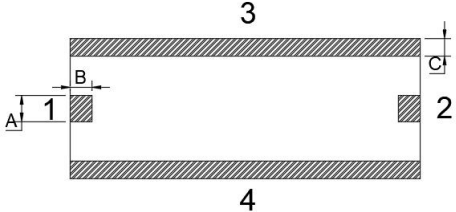
PIN	Connection
1	Input Port
2	Output Port
3	GND
4	GND

### Mounting Considerations

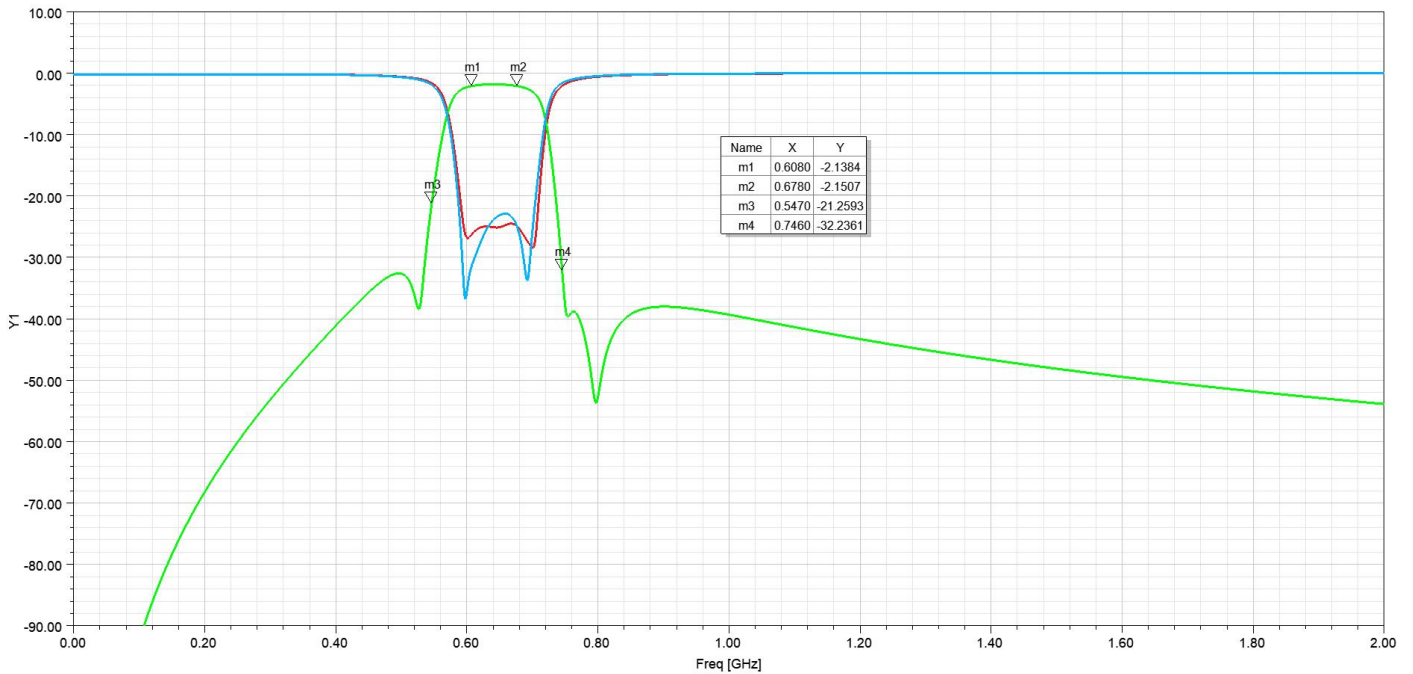


Unit: mm

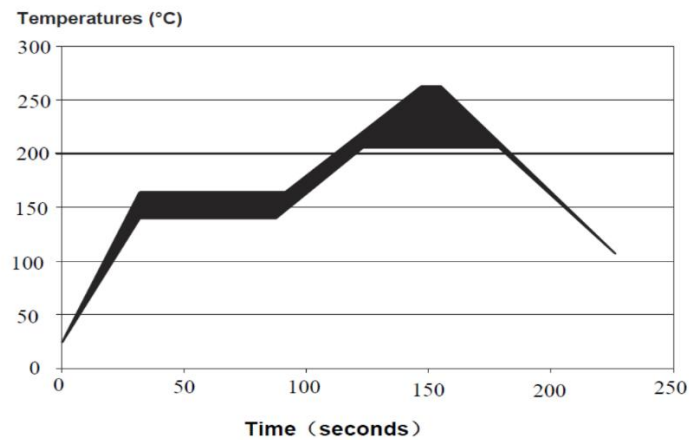
### Dimensions

Figure	Symbol	Dimension (mm)
	L	8.00 ± 0.20
	W	3.20 ± 0.20
	T	1.50 ± 0.20
	A	0.60 ± 0.10
	B	0.50 ± 0.10
	C	0.40 ± 0.10

### Typical Electrical Characteristics (T=25°C)



### Solder Reflow Standard Conditioning



### Storage Conditions

Temperature : +5 to +30 °C

Humidity : 20 to 70% RH

Term of storage : Within 12 months (After the delivery) \*

Baking : Unnecessary

\* After peeling off cover tape, do not keep exposing the products to the open air. For the products stored longer than 12 months, confirm their terminals and solderability before use.