

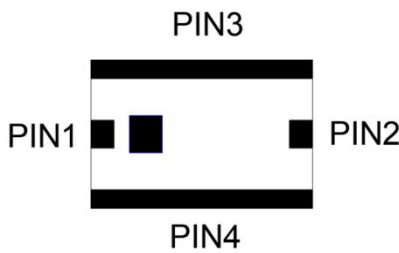
### Features

- Multilayer monolithic construction yields high reliability
- Low insertion loss and small size SMD chip design
- Can simplify your complex tuning and circuit design
- LTCC process

### Specifications

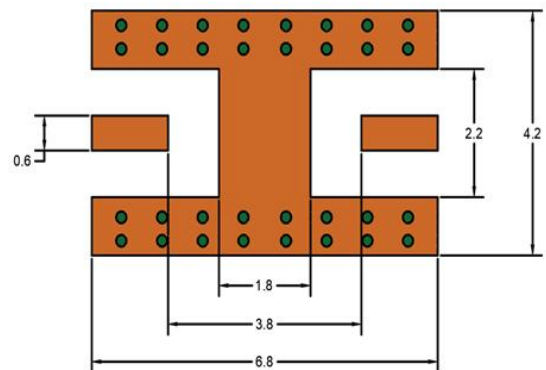
NO.	Parameter	SPEC	
1	Frequency (MHz)	550~950	
2	Insertion Loss (dB) @25°C	≤2.0	
3	Ripple (dB)	≤1.0	
4	VSWR(In BW)	≤1.8	
5	Attenuation	250MHz	≥50dB
		1250MHz	≥50dB
6	In/Output Impedance (Ω)	50	
<b>Operating &amp; Storage Condition (Component)</b>			
Operation Temperature Range: -40°C ~ +85°C			
Storage Temperature Range: -40°C ~ +85°C			
<b>Storage Condition before Soldering (Included packaging material)</b>			
Storage Temperature Range: +5 ~ +40 °C			
Humidity: 30 to 70% relative humidity			

### Construction



PIN	Connection
1	Input Port
2	Output Port
3	GND
4	GND

### Mounting Considerations



Unit: mm

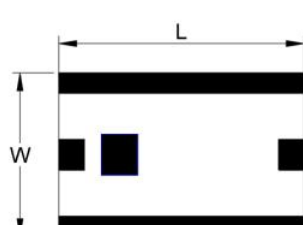

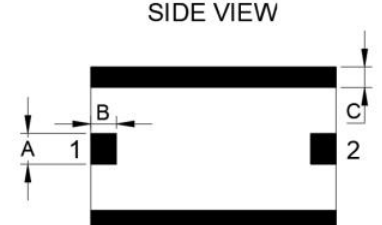
### Yantel Corporation

Add: No.308-322,3F,Building 1,Juchuang Jingu Innovation Park,Wenyuan Road 35,Xili Street,Nanshan,Shenzhen,China

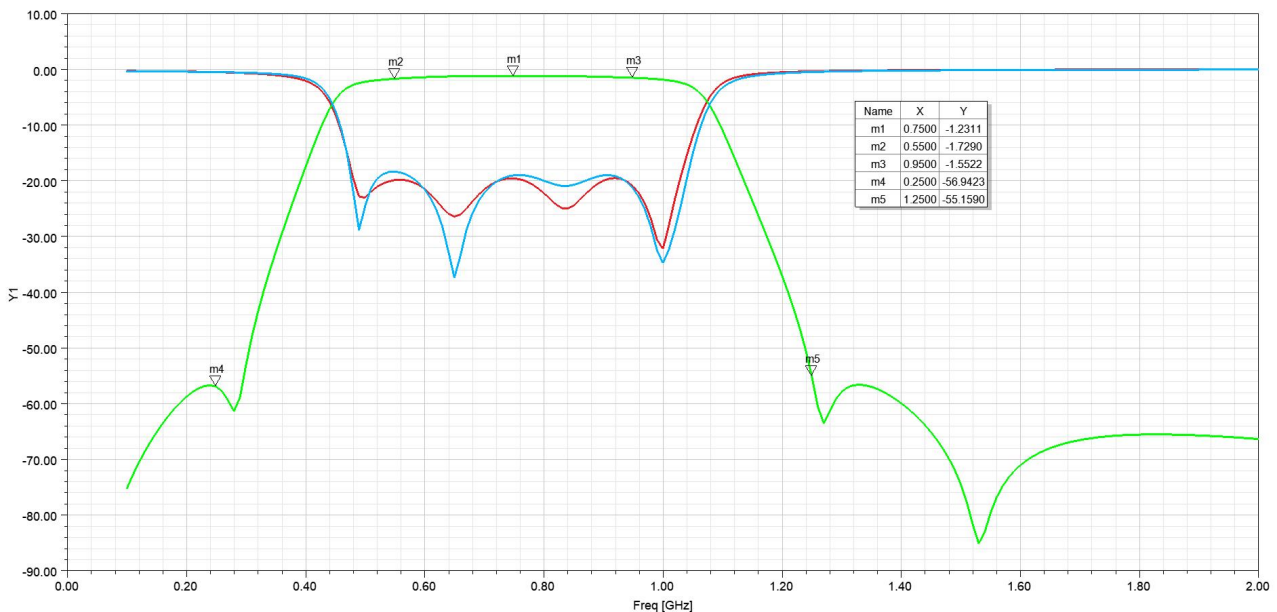
Tel: 86-755-8355-1886 Fax: 86-755-8355-2533

For detailed performance specs & shopping online see Yantel web site : [www.yantel-corp.com](http://www.yantel-corp.com)

### Dimensions

Figure	Symbol	Dimension (mm)
<div style="display: flex; justify-content: space-around;"> <div style="text-align: center;"> <p>TOP VIEW</p>  </div> <div style="text-align: center;"> <p>BOTTOM VIEW</p>  </div> </div> <div style="text-align: center; margin-top: 20px;"> <p>SIDE VIEW</p>  </div>	L	5.00 ± 0.20
	W	3.20 ± 0.20
	T	1.50 ± 0.20
	A	0.60 ± 0.10
	B	0.50 ± 0.10
	C	0.40 ± 0.10

### Typical Electrical Characteristics (T=25°C)



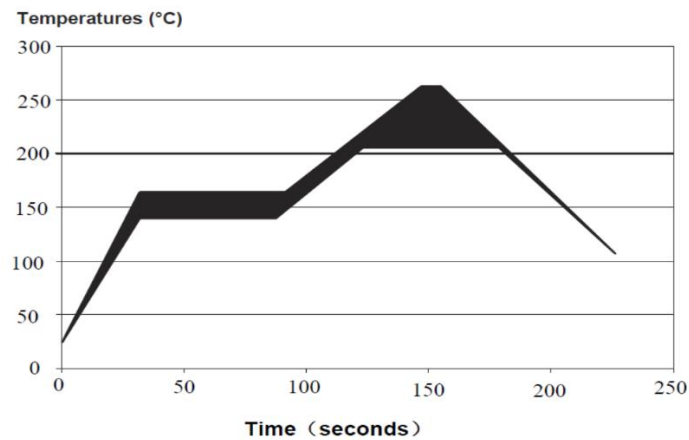
### Yantel Corporation

Add: No.308-322,3F,Building 1,Juchuang Jingu Innovation Park,Wenyuan Road 35,Xili Street,Nanshan,Shenzhen,China

Tel: 86-755-8355-1886 Fax: 86-755-8355-2533

For detailed performance specs & shopping online see Yantel web site : [www.yantel-corp.com](http://www.yantel-corp.com)

### Solder Reflow Standard Conditioning



### Storage Conditions

Temperature : +5 to +30 °C

Humidity : 20 to 70% RH

Term of storage : Within 12 months (After the delivery) \*

Baking : Unnecessary

\* After peeling off cover tape, do not keep exposing the products to the open air. For the products stored longer than 12 months, confirm their terminals and solderability before use.