

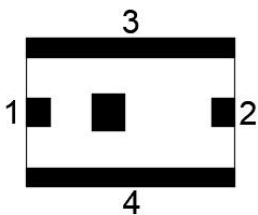
### Features

- Multilayer monolithic construction yields high reliability
- Low insertion loss and small size SMD chip design
- Can simplify your complex tuning and circuit design
- LTCC process

### Specifications

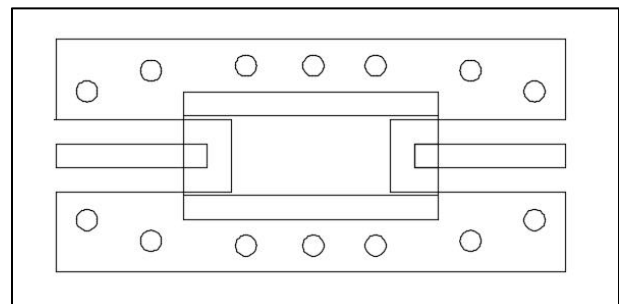
NO.	Parameter		SPC
1	Frequency (MHz)		1600-2000
2	Insertion Loss (dB) @25°C	1600-2000MHz	≤2.5
3	Attenuation (dB)	100-600MHz	≥50
		2400-3000MHz	≥40
		3000-5000MHz	≥50
4	VSWR		≤1.6
8	In/Output Impedance (Ω)		50
9	Permissible Input Power (W)		2W
<b>Operating &amp; Storage Condition (Component)</b>			
Operation Temperature Range: -40°C ~ +85°C			
Storage Temperature Range: -40°C~ +85°C			
<b>Storage Condition before Soldering (Included packaging material)</b>			
Storage Temperature Range: +5 ~ +40 °C			
Humidity: 30 to 70% relative humidity			

### Construction

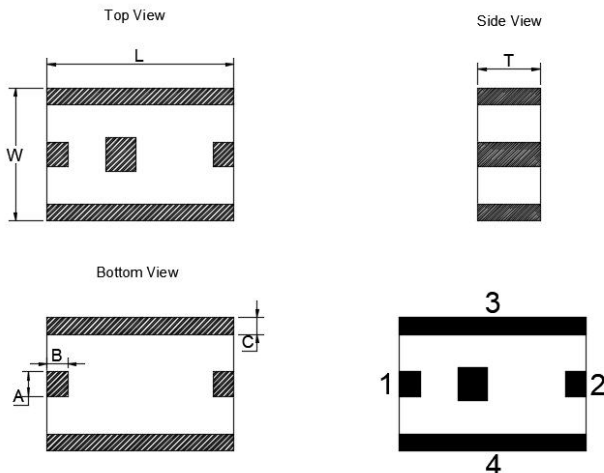


PIN	Connection
1	Input Port
2	Output Port
3	GND
4	GND

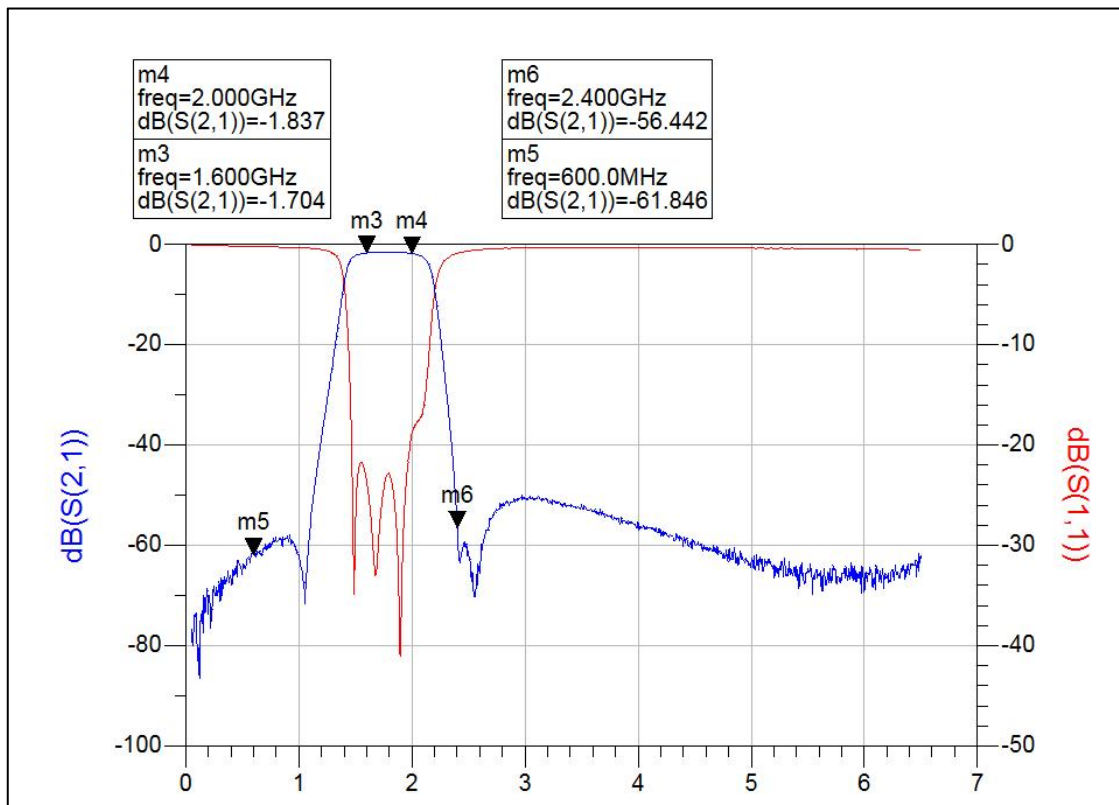
### Mounting Considerations



### Dimensions

Figure	Symbol	Dimension (mm)
	L	4.50 ± 0.20
	W	3.20 ± 0.20
	T	1.50 ± 0.20
	A	0.60 ± 0.10
	B	0.50 ± 0.10
	C	0.40 ± 0.10

### Typical Electrical Characteristics (T=25°C)



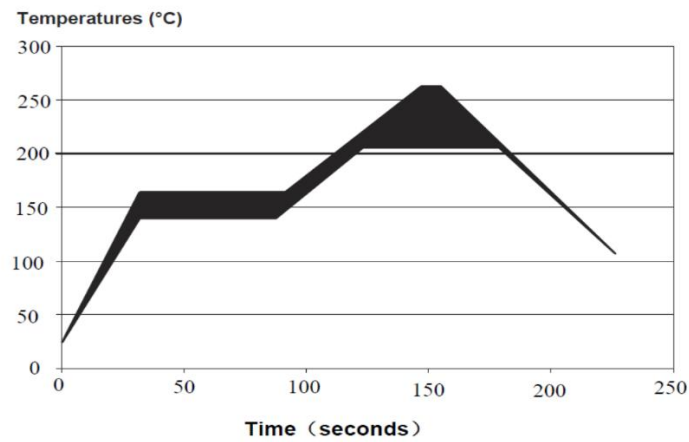
### Yantel Corporation

Add: No.308-322,3F,Building 1,Juchuang Jingu Innovation Park,Wenyuan Road 35,Xili Street,Nanshan,Shenzhen,China

Tel: 86-755-8355-1886 Fax: 86-755-8355-2533

For detailed performance specs & shopping online see Yantel web site : [www.yantel-corp.com](http://www.yantel-corp.com)

### Solder Reflow Standard Conditioning



### Storage Conditions

Temperature : +5 to +30 °C

Humidity : 20 to 70% RH

Term of storage : Within 12 months (After the delivery) \*

Baking : Unnecessary

\* After peeling off cover tape, do not keep exposing the products to the open air. For the products stored longer than 12 months, confirm their terminals and solderability before use.