

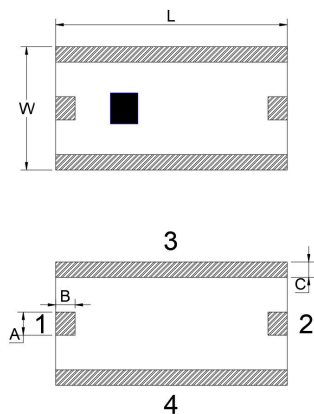
Features

- Multilayer monolithic construction yields high reliability
- Low insertion loss and small size SMD chip design
- Can simplify your complex tuning and circuit design
- LTCC process

Specifications

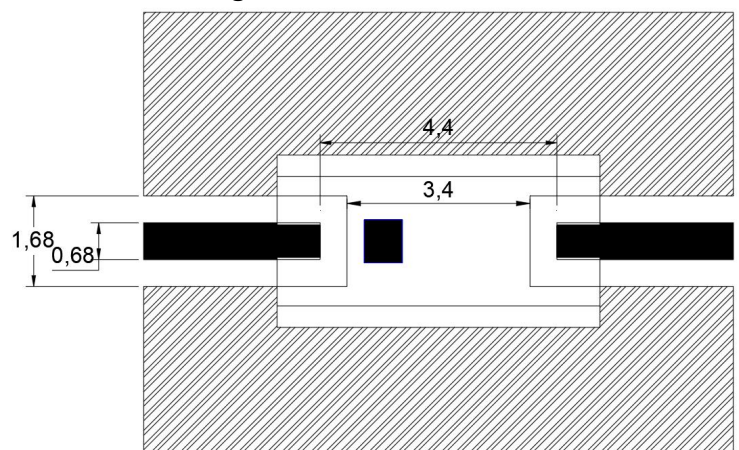
NO.	Parameter	SPEC	
1	Frequency (MHz)	5200~6000	
2	Insertion Loss (dB) @25°C	≤3.0	
3	VSWR(In BW)	≤2.0	
4	Ripple (dB)	≤2.0	
5	Attenuation(dBc)	0~4800MHz	≥45
		6500~8000MHz	≥45
		8000~10000MHz	≥35
6	Phase Consistency (8 pcs per group)	±5°	
7	In/Output Impedance (Ω)	50	
8	Power	5W	
Operating & Storage Condition (Component)			
Operation Temperature Range: -40°C ~ +85°C			
Storage Temperature Range: -40°C ~ +85°C			
Storage Condition before Soldering (Included packaging material)			
Storage Temperature Range: +5 ~ +40 °C			
Humidity: 30 to 70% relative humidity			

Construction



PIN	Connection
1	Input Port
2	Output Port
3	GND
4	GND

Mounting Considerations



Unit: mm

Yantel Corporation

Add: No.308-322,3F,Building 1,Juchuang Jingu Innovation Park,Wenyuan Road 35,Xili Street,Nanshan,Shenzhen,China

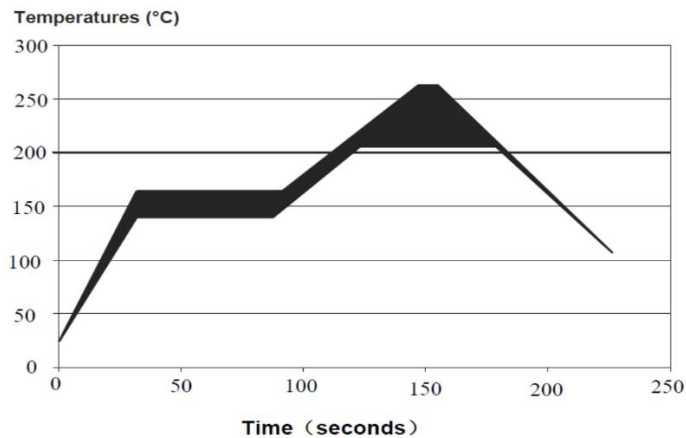
Tel: 86-755-8355-1886 Fax: 86-755-8355-2533

For detailed performance specs & shopping online see Yantel web site : www.yantel-corp.com

Dimensions

Figure	Symbol	Dimension (mm)
	L	6.00 ± 0.20
	W	3.20 ± 0.20
	T	2.00 ± 0.20
	A	0.60 ± 0.10
	B	0.50 ± 0.10
	C	0.40 ± 0.10

Solder Reflow Standard Conditioning



Storage Conditions

Temperature : +5 to +30 °C

Humidity : 20 to 70% RH

Term of storage : Within 12 months (After the delivery) *

Baking : Unnecessary

* After peeling off cover tape, do not keep exposing the products to the open air. For the products stored longer than 12 months, confirm their terminals and solderability before use.