

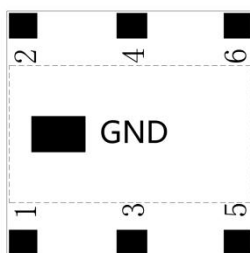
Features

- Multilayer monolithic construction yields high reliability
- Low insertion loss and small size SMD chip design
- Can simplify your complex tuning and circuit design
- LTCC process

Specifications

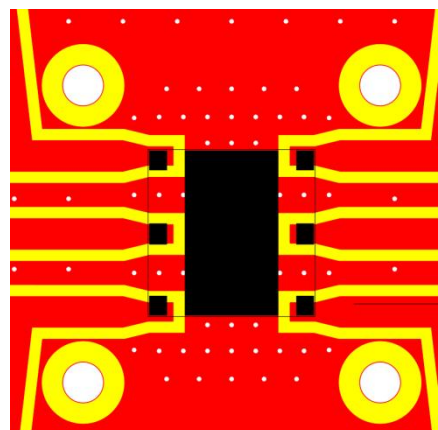
NO.	Specification				
		LPF1	LPF2	LPF3	
1	Frequency range (MHz)	225~330	330~480	480~678	
2	Insertion Loss (dB) @25°C	1.2	0.8	0.8	
3	VSWR (In BW)	1.5	1.5	1.5	
4	Ripple	1.0	1.0	1.0	
5	Impedance (Ω)	50	50	50	
6	Attenuation (dB)	450~990MHZ	50	-	-
		660~1440 MHZ	-	50	-
		960~2034 MHZ	-	-	50
Operating & Storage Condition (Component)					
Operation Temperature Range: -40°C ~ +85°C					
Storage Temperature Range: -40°C ~ +85°C					
Storage Condition before Soldering (Included packaging material)					
Storage Temperature Range: +5 ~ +40 °C					
Humidity: 30 to 70% relative humidity					

Construction



PIN	Connection	PIN	Connection
1	LPF1 input Port	2	LPF1 output Port
3	LPF2 input Port	4	LPF2 output Port
5	LPF3 input Port	6	LPF3 output Port

Mounting Considerations



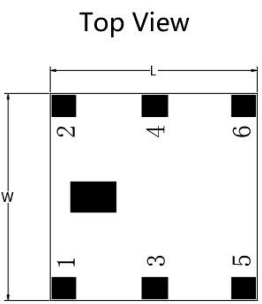
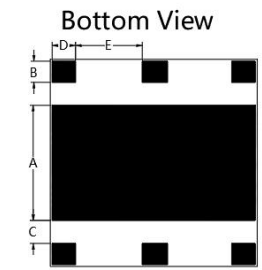

Unit: mm
 Line width to be designed to match 50 Ω characteristic impedance, depending on PCB material and thickness

Yantel Corporation

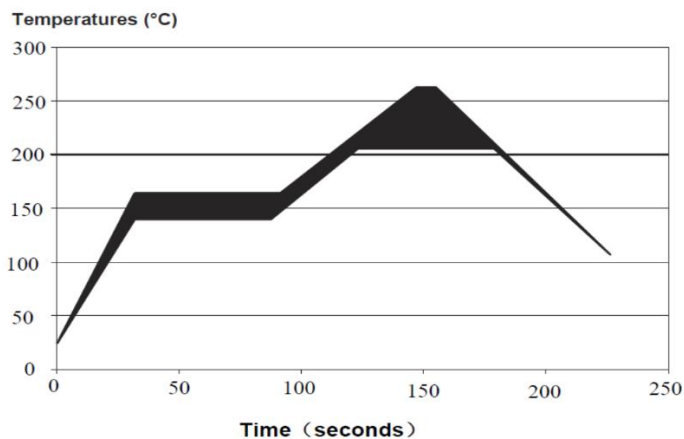
Add: No.308-322,3F,Building 1,Juchuang Jingu Innovation Park,Wenyuan Road 35,Xili Street,Nanshan,Shenzhen,China
 Tel: 86-755-8355-1886 Fax: 86-755-8355-2533

For detailed performance specs & shopping online see Yantel web site : www.yantel-corp.com

Dimensions

Figure	Symbol	Dimension (mm)
 <p>Top View</p>	L	9.00 ± 0.10
	W	9.00 ± 0.10
	T	2.40 ± 0.10
	A	5.00 ± 0.10
	B	0.92 ± 0.10
	C	1.00 ± 0.10
	D	1.10 ± 0.10
 <p>Bottom View</p>	E	2.90 ± 0.10
 <p>Side View</p>		

Solder Reflow Standard Conditioning



Storage Conditions

Temperature : +5 to +30 °C

Humidity : 20 to 70% RH

Term of storage : Within 12 months (After the delivery) *

Baking : Unnecessary

* After peeling off cover tape, do not keep exposing the products to the open air. For the products stored longer than 12 months, confirm their terminals and solderability before use.

Yantel Corporation

Add: No.308-322,3F,Building 1,Juchuang Jingu Innovation Park,Wenyuan Road 35,Xili Street,Nanshan,Shenzhen,China

Tel: 86-755-8355-1886 Fax: 86-755-8355-2533

For detailed performance specs & shopping online see Yantel web site : www.yantel-corp.com