

### Features

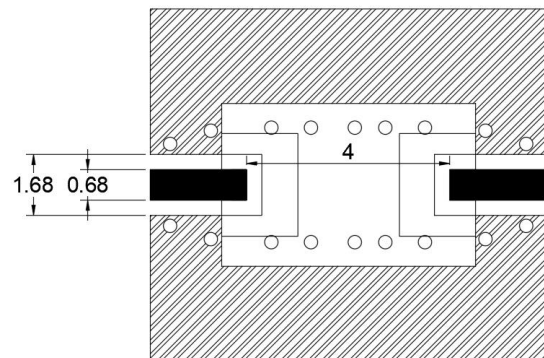
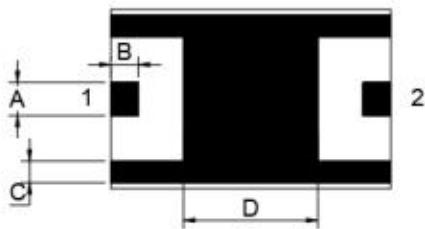
- Multilayer monolithic construction yields high reliability
- Low insertion loss and small size SMD chip design
- Can simplify your complex tuning and circuit design
- LTCC process

### Specifications

NO.	Parameter	SPC
1	Frequency range(MHz)	1400-1800
2	Insertion Loss (dB)@25°C	≤3.0
3	Return Loss (dB)	≥10
4	Attenuation (dBc)	≥30@1258-1278MHz
5	In/Output Impedance (Ω)	50
6	Power(W)	2W
<b>Operating &amp; Storage Condition (Component)</b> Operation Temperature Range: -40°C ~ +85°C Storage Temperature Range: -40°C~ +85°C		
<b>Storage Condition before Soldering (Included packaging material)</b> Storage Temperature Range: +5 ~ +40 °C Humidity: 30 to 70% relative humidity		

### Mounting Considerations

### Construction



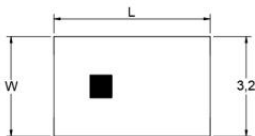

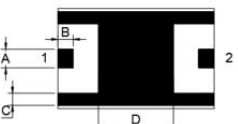
PIN	Connection	PIN	Connection
1	input Port	2	output Port

### Yantel Corporation

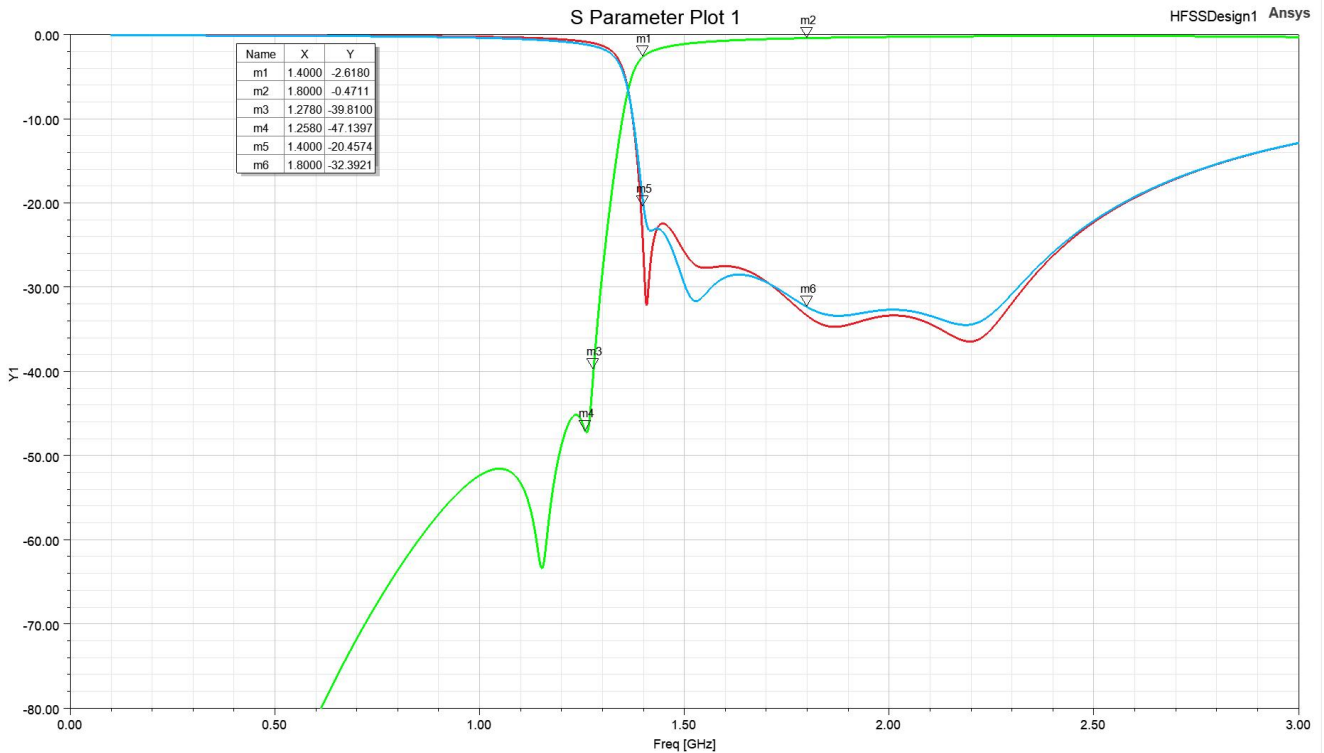
Add: No.308-322,3F,Building 1,Juchuang Jingu Innovation Park,Wenyuan Road 35,Xili Street,Nanshan,Shenzhen,China  
Tel: 86-755-8355-1886 Fax: 86-755-8355-2533

For detailed performance specs & shopping online see Yantel web site : [www.yantel-corp.com](http://www.yantel-corp.com)

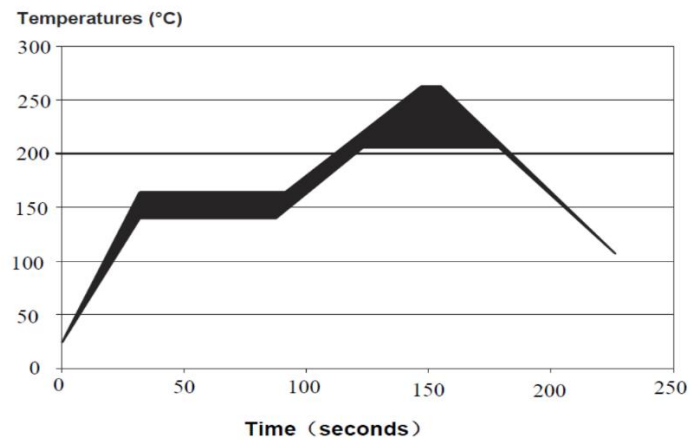
### Dimensions

Figure	Symbol	Dimension (mm)
<p><b>Top View</b></p> 	L	5.00 ± 0.20
	W	3.20 ± 0.20
<p><b>Side View</b></p> 	T	1.20 ± 0.20
<p><b>Bottom View</b></p> 	A	0.60 ± 0.10
	B	0.40 ± 0.10
	C	0.40 ± 0.10
	D	2.00 ± 0.10

### Typical Electrical Characteristics (T=25°C)



### Solder Reflow Standard Conditioning



### Storage Conditions

Temperature : +5 to +30 °C

Humidity : 20 to 70% RH

Term of storage : Within 12 months (After the delivery) \*

Baking : Unnecessary

\* After peeling off cover tape, do not keep exposing the products to the open air. For the products stored longer than 12 months, confirm their terminals and solderability before use.