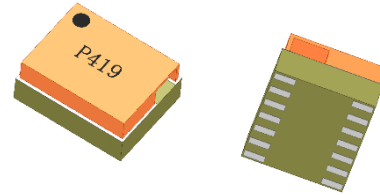


Features

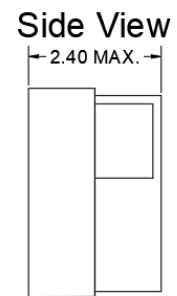
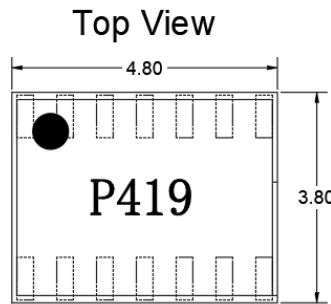
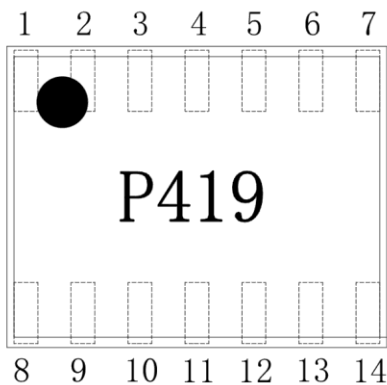
- Multilayer monolithic construction yields high reliability
- Low insertion loss and small size SMD chip design
- Can simplify your complex tuning and circuit design
- LTCC process



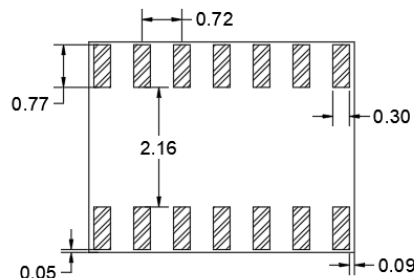
Specifications

NO.	Items	Spec	Typ.	Unit
1	Frequency range	80~300	80~300	MHz
2	Insertion Loss, above 6.0 dB	1.6 max.	1.3	dB
3	Isolation.	5 min.	6.5	dB
4	Phase Unbalance	5 max.		°
5	Amplitude Unbalance	0.8 max.		dB
6	Return Loss (Input)	10 min.	11.5	dB
7	Return Loss (Output)	10 min.	12.5	dB
Operating & Storage Condition (Component)				
Operation Temperature Range: -40°C ~ +85°C				
Storage Temperature Range: -40°C ~ +85°C				
Storage Condition before Soldering (Included packaging material)				
Storage Temperature Range: +5 ~ +40 °C				
Humidity: 30 to 70% relative humidity				

Construction & Dimensions



Bottom View



Unit:mm
Tolerance: ±0.20mm

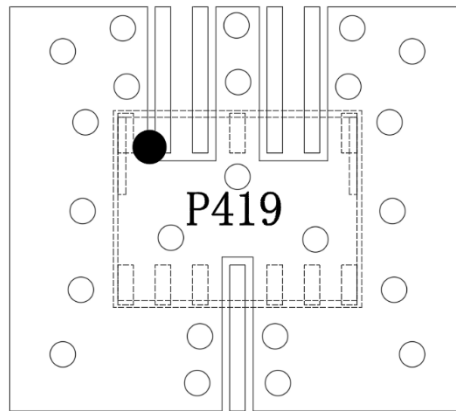
SUM PORT	11
PORT 1	2
PORT 2	3
PORT 3	5
PORT 4	6
GND	1、4、7、8、9 、10、12、13、14

Yantel Corporation

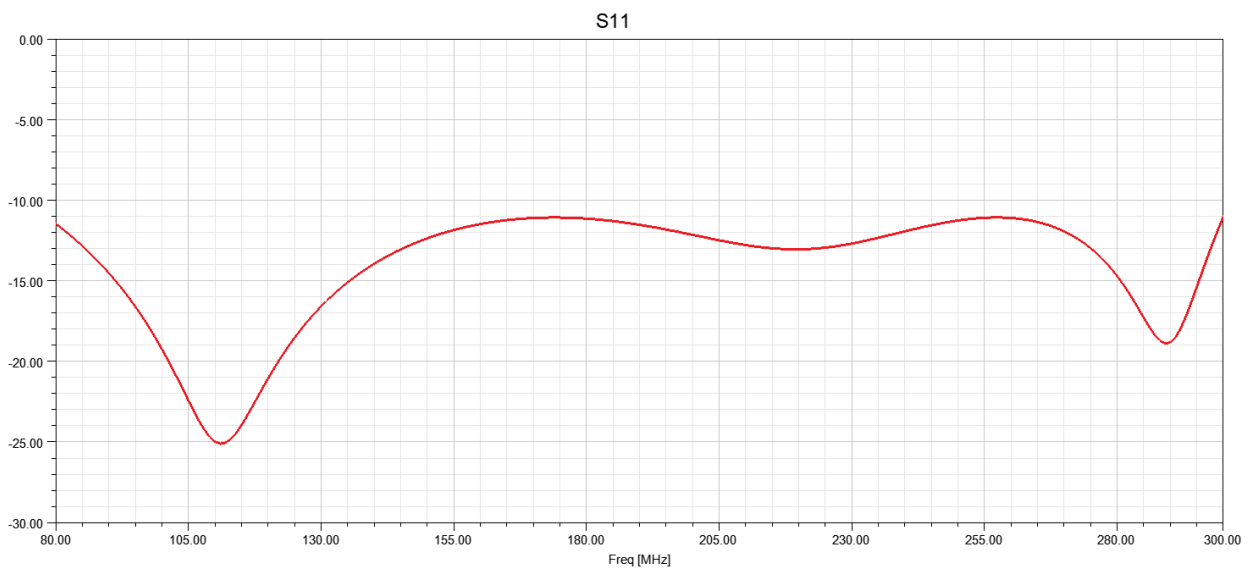
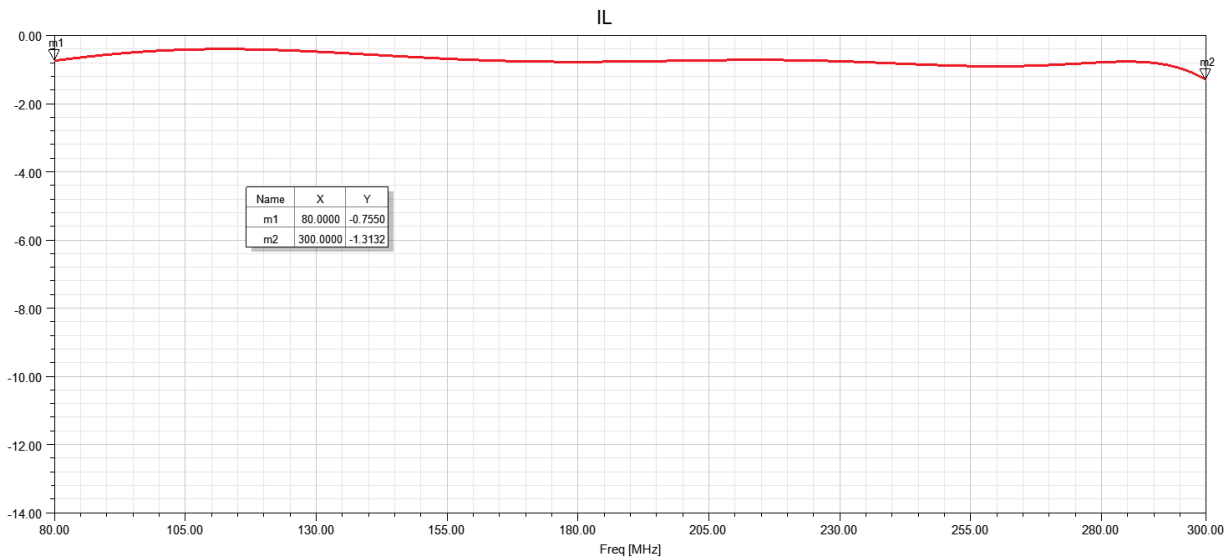
Add: No.308-322,3F,Building 1,Juchuang Jingu Innovation Park,Wenyuan Road 35,Xili Street,Nanshan,Shenzhen,China
Tel: 86-755-8355-1886 Fax: 86-755-8355-2533

For detailed performance specs & shopping online see Yantel web site : www.yantel-corp.com

Mounting Considerations



Typical Electrical Characteristics (T=25°C)



Yantel Corporation

Add: No.308-322,3F,Building 1,Juchuang Jingu Innovation Park,Wenyuan Road 35,Xili Street,Nanshan,Shenzhen,China

Tel: 86-755-8355-1886 Fax: 86-755-8355-2533

For detailed performance specs & shopping online see Yantel web site : www.yantel-corp.com

