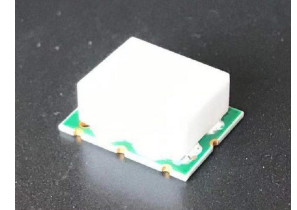


### Features

- very wideband, DC to 6800 MHz
- very good phase unbalance, 1 deg. typ.
- excellent amplitude unbalance, 0.1 dB typ.
- rugged shielded case

### Applications

- laboratory
- test set-ups
- PCS
- UNII
- WiMAX
- WiFi
- blue tooth



DC to 6800 MHz

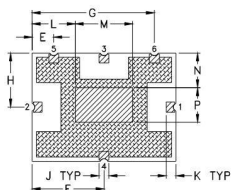
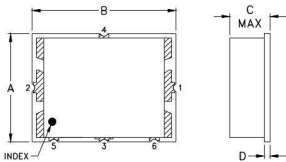
Electrical Schematic



### Electrical Specifications

Parameter	Frequency (MHz)	Min.	Typ.	Max.	Uni
Frequency Range	DC-6800	DC	-	6800	MHz
Insertion Loss Above 9.5 dB	DC-6800	-	0.8	1.6	dB
Isolation	DC-6800	17	19	--	dB
Phase Unbalance	DC-6800	-	3	6	Degree
Amplitude Unbalance	DC-6800	0.1	0.4	0.7	dB
VSWR (Port S)	DC-6800	-	1.3	1.6	:1
VSWR (Port 1-2)	DC-6800	-	1.3	2.2	:1

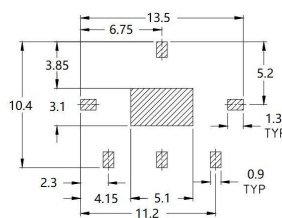
### Outline Drawing



Pin Connections	
SUM PORT	3
PORT 1	1
PORT 2	2
GROUND	4/5/6

Outline Dimensions (mm)			
A	9.70	G	10.80
B	12.70	H	4.75
C	4.52	J	0.89
D	0.51	K	0.86
E	1.91	L	3.81
F	6.35	P	3.05
M	5.08	N	3.05

### PCB Land Pattern

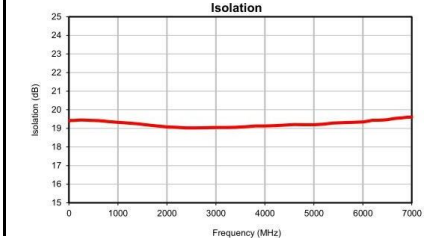
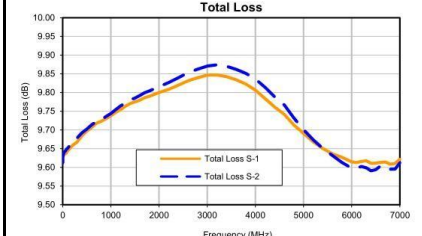
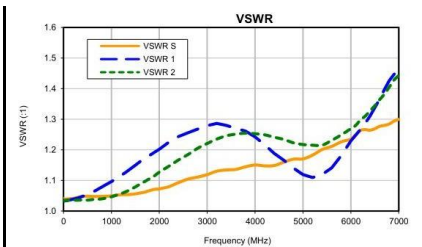


Suggested Layout,  
Tolerance to be within  $\pm 0.05$  mm

### Maximum Ratings

- Operating Temperature -40°C to 85°C
- Storage Temperature -55°C to 100°C
- Power Input (as a splitter) 0.5W max.
- Internal Dissipation 0.5W max.

Permanent damage may occur if any of these limits are exceeded.



## Yantel Corporation

Add: No.308-322,3F,Building 1,Juchuang Jingu Innovation Park,Wen Yuan Road 35,Xili Street,Nanshan,Shenzhen,China  
Tel 86-755-8355-1886 Fax 86-755-8355-2533

For detailed performance specs & shopping online see Yantel web site : [www.yantel-corp.com](http://www.yantel-corp.com)