

Manual Step Attenuator

- ◆ DC to 3GHz
- ◆ 0 to 4.5dB in 0.1 dB Step
- ◆ 2 Watt
- ◆ Choice of SMA Connectors



Features

- Using advanced microstrip technology, ultra-small size
- Attenuation values are adjustable in a power-on state, no sudden big reflection.
It adopts an innovative technology, and thus it eliminates sudden big reflection in attenuators when attenuation is being adjusted, preventing the preliminary RF circuit from being burnt, and keeping the system stable
- Step values: 0.1dB, 0.2dB, 0.4dB, 0.8dB, 1dB, 2dB
- 46 attenuation values
- High attenuation accuracy, low insertion loss
- High adjustment accuracy
- Low cost – High Performance
- Adjusting the transmitting (receiving) distance of RF signal precisely. Adjusting accuracy is limited to 5cm.
- Switch repeatability avg.> 10000 operations (5000 cycles) per switch.
- PC(Polycarbonate) Switch, operating temperature of 120°C is available.
- Attenuation values are adjustable in a power-on state, test data can be read continuously, no interruption.

Specifications

Frequency Range DC to 3GHz
Attenuation 0 to 4.5dB
Step Value 0.1dB
Insertion loss at 0dB (typ.)
 0.55dB at 1 GHz
 0.70dB at 2 GHz
 1.0dB at 3 GHz

Attenuation Accuracy (typ.)

-0.1 to +0.50dB at 1GHz
 0 to +0.9dB at 2GHz
 0 to +1.6dB at 3GHz

Nominal Impedance 50 Ohm

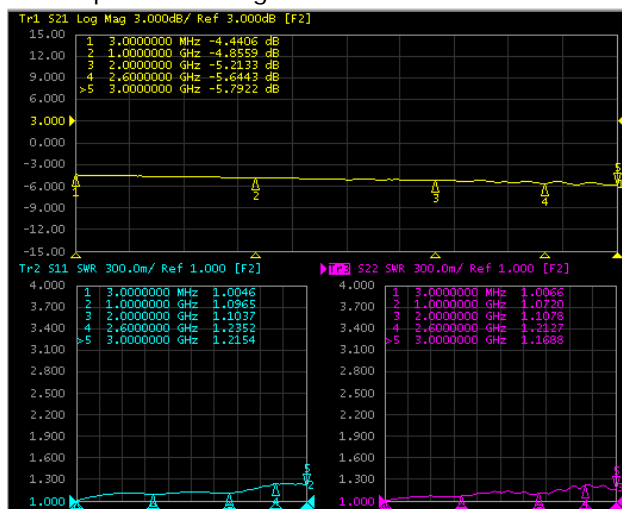
Average Power 2 Watt

Operating Temperature -40°C to +85°C

Freq. Range (GHz)	Connector Type	VSWR(:1)	
		Typ.	Max.
DC to 3	SMA	1.25	1.45

Characteristic

For example the testing curves of VAS0604H5S21A of 4.5dB



Model No. Description

VAS ** ** ** * * *
 Type Attenuation Range Step Value Connector Type Max. Power Connector Option

VAS: Step Variable Attenuator

Type: 06 represents type number

Attenuation Range: Maximum attenuation.

Connector Type: S and N available. S is SMA and N is N type connector.

Max. Power: 2 and 5 are available, currently 2W and 5W are available.

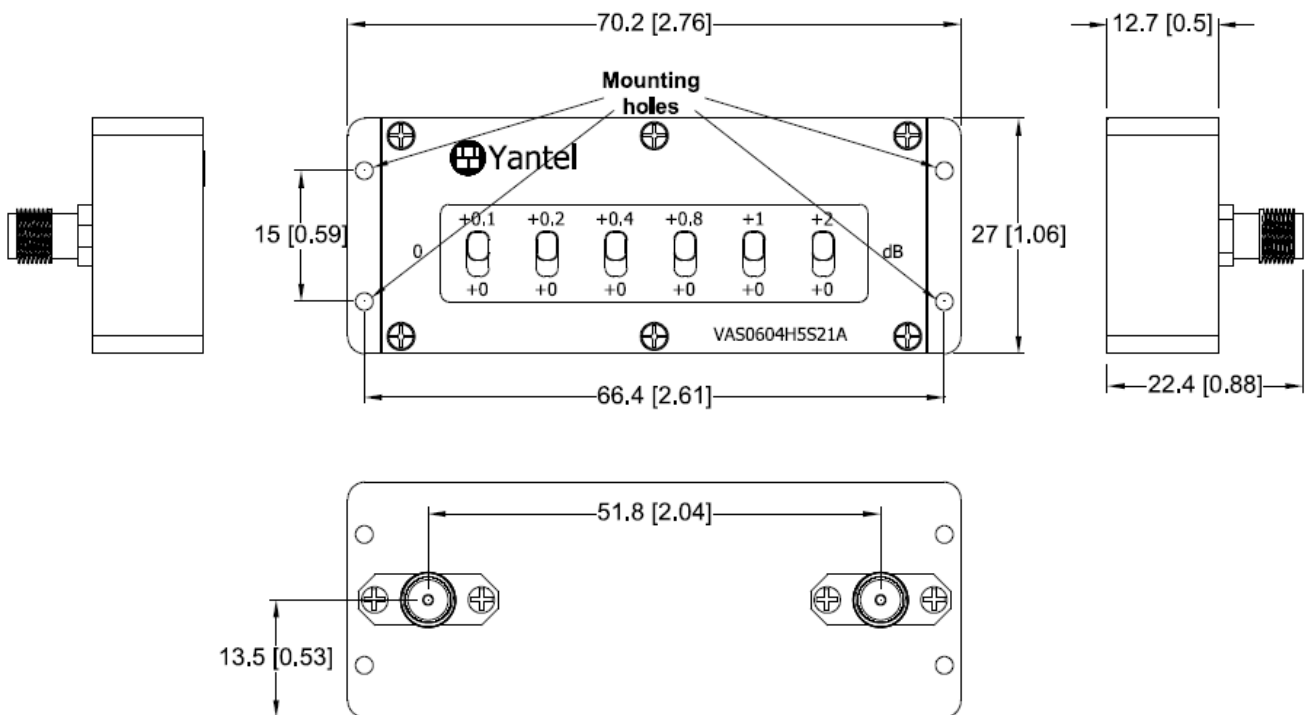
Connector Options:

Options	IO
1	Female/Female
2	Male/Female
3	Male/Male

Connector Position: "A" represents back connectors, without "A" represents left and right connectors.

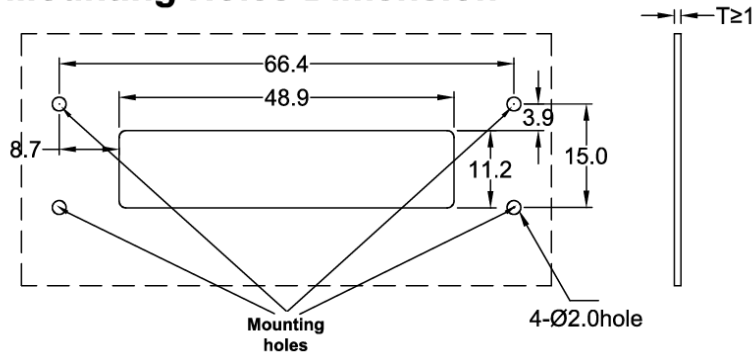
Package Outlines

SMA Connector Units:mm[inch]



Panel:

Mounting Holes Dimension



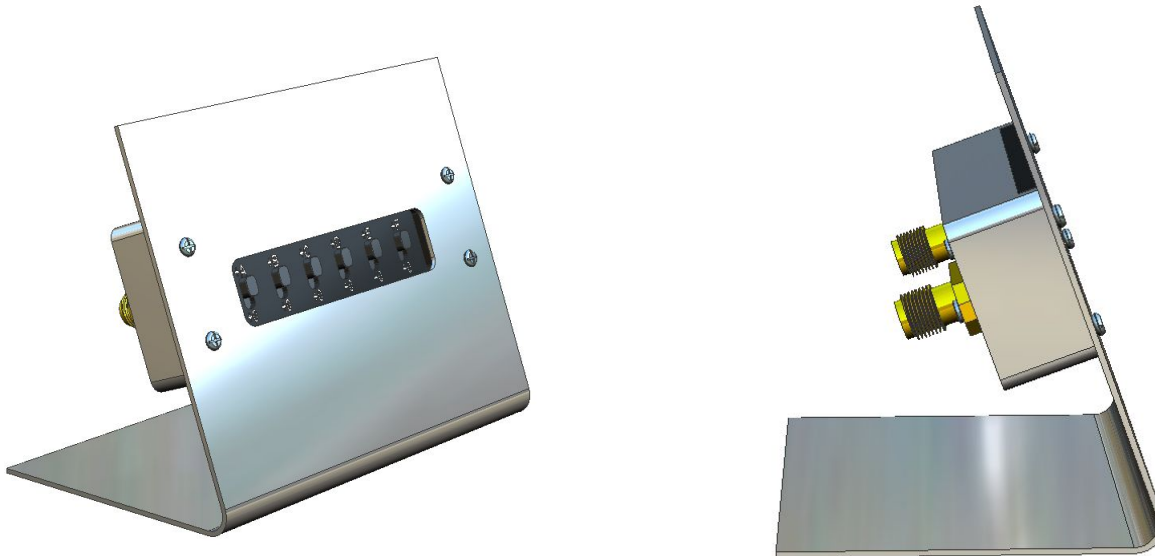
NOTE:

1. ALL dimensions shown in mm(tolerance: ± 0.2 mm) unless stated otherwise
2. RoHS Compliant in accordance with EU Directive(2011/65/EU)

Application case:

Repeater: This VAS series can be rack mountable, easier to operate from the rack outside.

Application



Note:

Attempt to disassemble the product can damage it and void your warranty. In case of any malfunction, please contact your local representative, distributor or the factory immediately.