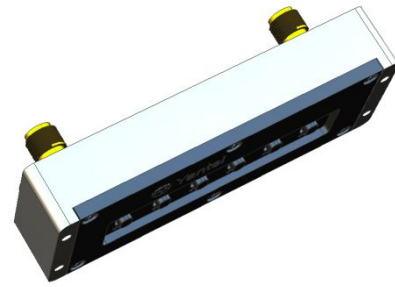


Manual Step Attenuator

- ◆ DC to 4GHz
- ◆ 0 to 45dB in 1dB Step
- ◆ 2 Watt
- ◆ Choice of SMA or N Type Connectors



Features

- Using advanced microstrip technology, ultra-small size
- Attenuation values are adjustable in a power-on state, no sudden big reflection.
It adopts an innovative technology, and thus it eliminates sudden big reflection in attenuators when attenuation is being adjusted, preventing the preliminary RF circuit from being burnt, and keeping the system stable
- Step attenuation: 1dB, 2dB, 4dB, 8dB,15dB,15dB,
- 46 attenuation values
- High attenuation accuracy, low insertion loss
- High adjustment accuracy
- Low cost – High Performance
- Adjusting the transmitting (receiving) distance of RF signal precisely. Adjusting accuracy is limited to 5cm.
- Switch repeatability avg.> 10000 operations (5000 cycles) per switch.
- PC(Polycarbonate) Switch, operating temperature of 120°C is available.
- Attenuation values are adjustable in a power-on state, test data can be read continuously, no interruption.

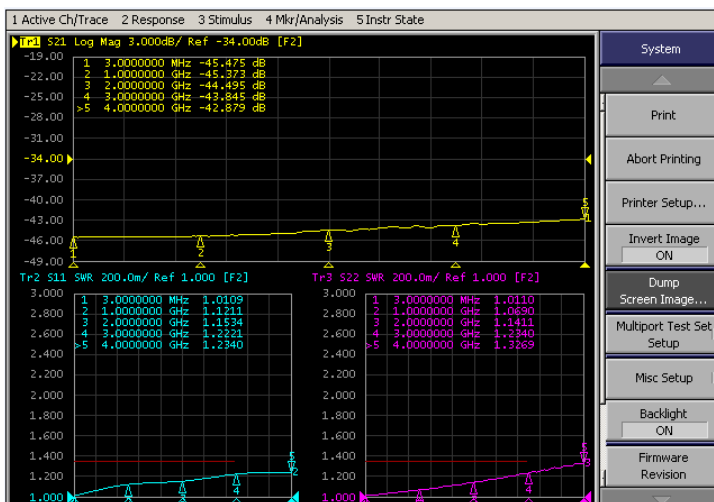
Specifications

- Frequency Range** DC to 4GHz
Attenuation 0 to 45dB
Step Value 1dB
Insertion loss at 0dB (typ.)
 SMA connector 0.45dB at 1 GHz
 0.60dB at 2 GHz
 1.15dB at 3 GHz
 1.40dB at 4 GHz
- Attenuation Accuracy (typ.)**
 SMA connector 0 to +0.60dB at 1GHz
 -0.60 to +0.85dB at 2GHz
 ±1.5dB at 3GHz
 -3.0 to +2.50dB at 4GHz
- Nominal Impedance** 50 Ohm
Average Power 2 Watt
Operating Temperature -40°C to +85°C

Freq. Range (GHz)	Connector Type	VSWR(:1)	
		Typ.	Max.
DC to 3	SMA	1.20	1.40
3 to 4	SMA	1.30	1.45

Characteristic

For example the testing curves of VAS064501S2A of 45 dB



Yantel Corporation

Add: 3F, Building 3, Southern District 2 of ZhongGuan Honghualing Industrial Park, Xili, Nanshan, Shenzhen, China
 Tel: 86-755-8355-1886 Fax: 86-755-8355-2533

Model No. Description

VAS ** ** ** * * *
 Type Attenuation Range Step Value Connector Type Max. Power Connector Option

VAS: Step Variable Attenuator

Type: 06 represents type number

Attenuation Range: Maximum attenuation.

Connector Type: S and N available. S is SMA and N is N type connector.

Max. Power: 2 and 5 are available, currently 2W and 5W are available.

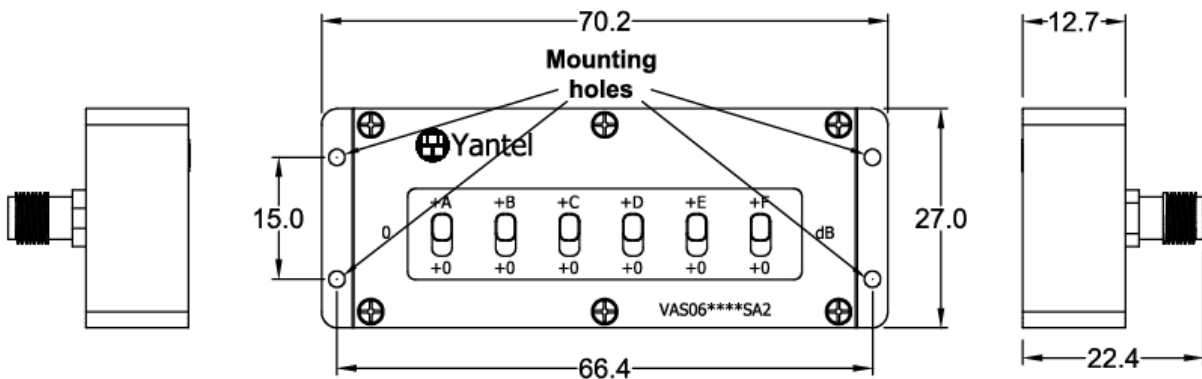
Connector Options:

Options	IO
1	Female/Female
2	Male/Female
3	Male/Male

Connector Position: "A" represents back connectors, without "A" represents left and right connectors.

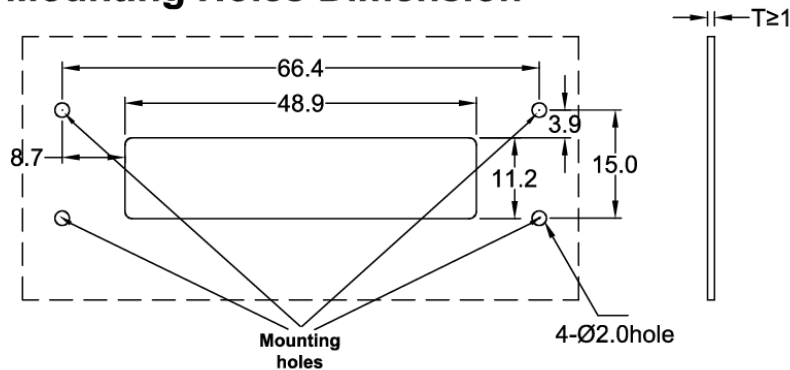
Package Outlines

SMA Connector Units:mm



Panel:

Mounting Holes Dimension



NOTE:

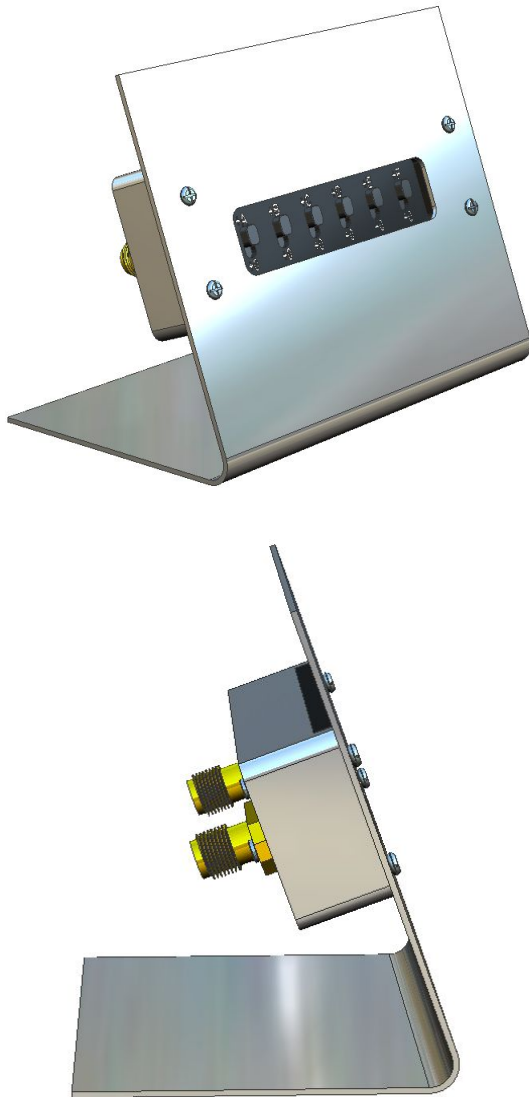
1. ALL dimensions shown in mm (tolerance: +/-0.2mm) unless stated otherwise
2. RoHS Compliant in accordance with EU Directive (2011/65/EU)

Yantel Corporation

Add: 3F, Building 3, Southern District 2 of ZhongGuan Honghualing Industrial Park, Xili, Nanshan, Shenzhen, China
 Tel: 86-755-8355-1886 Fax: 86-755-8355-2533

Application case:

Repeater: This VAS series can be rack mountable, easier to operate from the rack outside.

Application**Note:**

Attempt to disassemble the product can damage it and void your warranty. In case of any malfunction, please contact your local representative, distributor or the factory immediately.