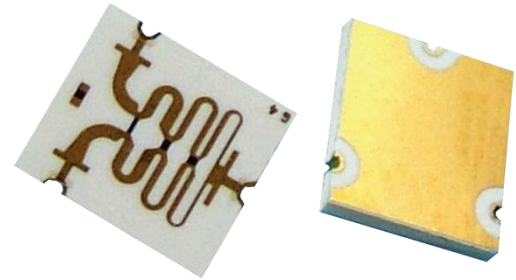


#### DESCRIPTION

Yantel introduces its new high frequency surface mountable Wilkinson Power Divider. The power divider utilizes Yantel's high dielectric ceramic material which provides small size and minimal performance variation over temperature. The compact size, broad band performance and ease of integration make this power divider ideal anywhere board space is of a premium and quality signal splitting or combining is required.



#### FEATURES

- Broad Band 6 to 18 GHz Performance
- 0.7dB Typical Insertion Loss
- 20dB Typical Isolation and Return Loss
- Excellent Phase and Amplitude Balance
- Compact Solder Surface Mount Package

#### Electrical Specifications at 25°C

Parameter	Specification
Frequency Range	6GHz~18GHz
VSWR	≤2.0
Insertion Loss	≤4dB
In-Band Flatness	≤1.2dB <sub>p-p</sub>
Isolation	≥15dB
Phase Balance	<±3°
Amplitude Balance	<±0.1 dB
Characteristic Impedance	50 Ω
Output Install	Bonding/SMD
Package Size	4mm*4.7mm*0.254mm

#### Yantel Corporation

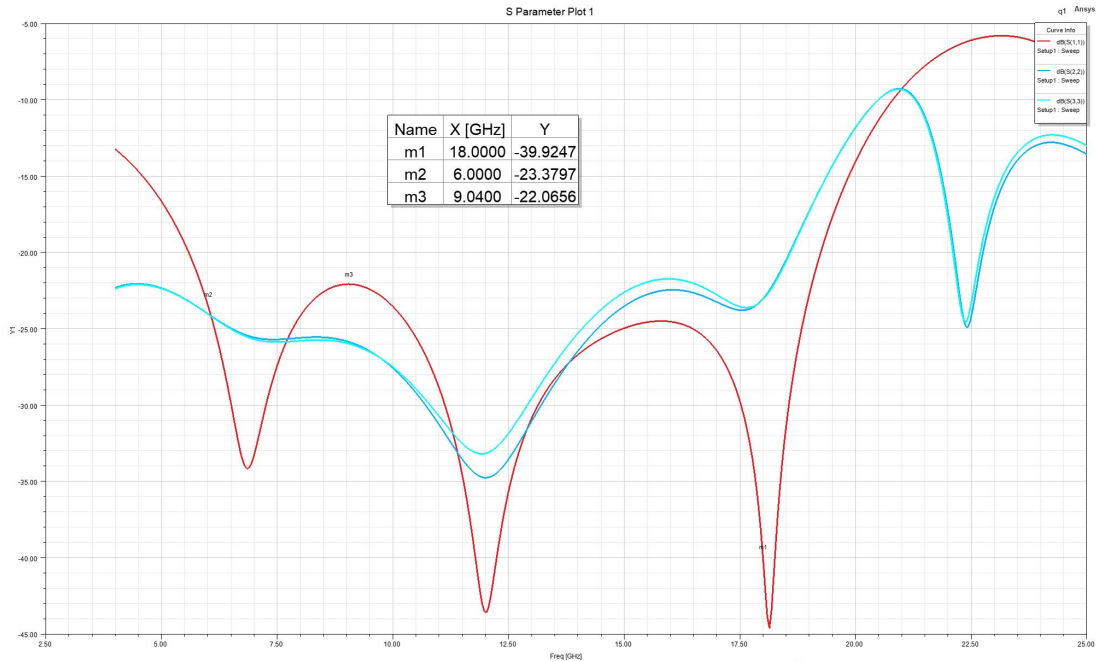
Add: No.308-322,3F,Building 1,Juchuang Jingu Innovation Park,Wenyuan Road 35,Xili Street,Nanshan,Shenzhen,China

Tel: 86-755-8355-1886 Fax: 86-755-8355-2533

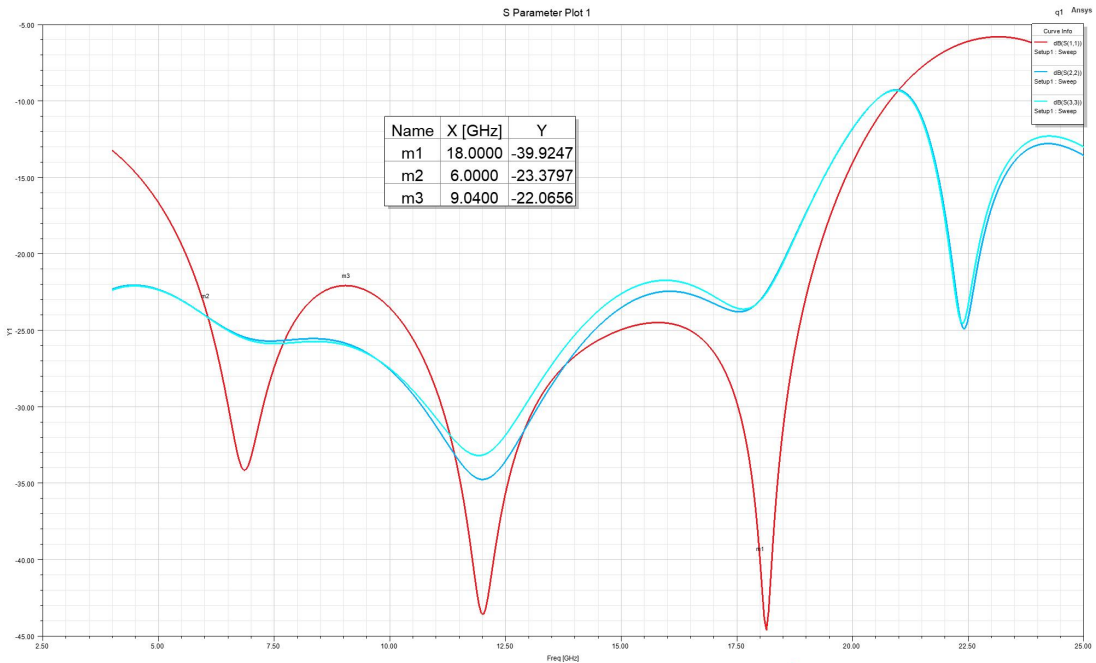
For detailed performance specs & shopping online see Yantel web site : [www.yantel-corp.com](http://www.yantel-corp.com)

### Typical Measured Performance

#### Return Loss



#### Insertion Loss

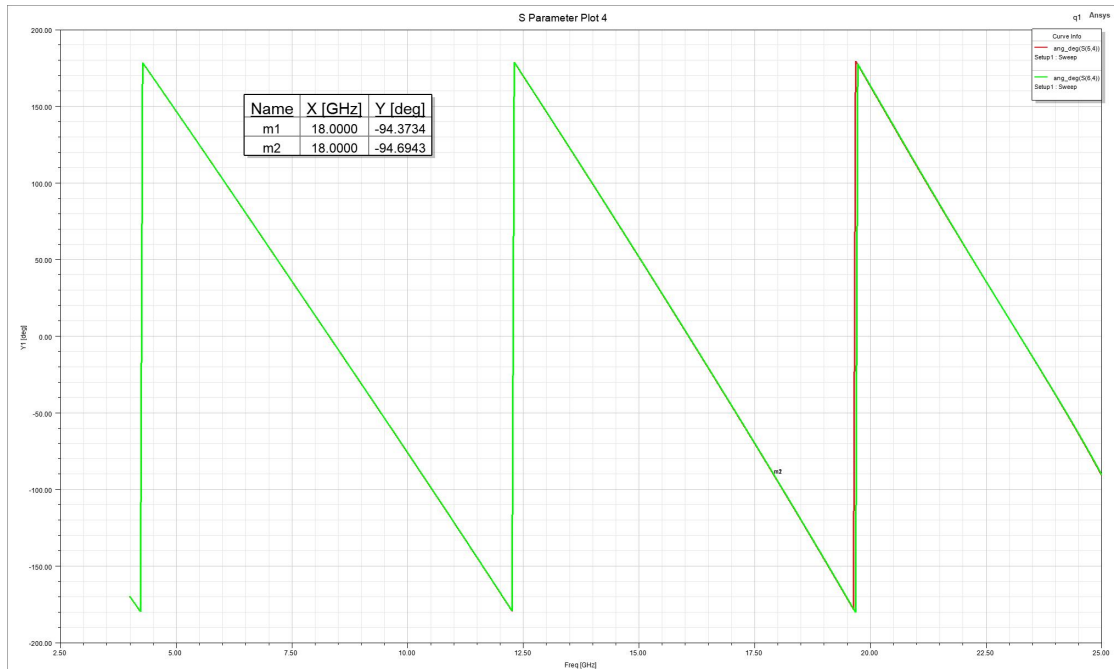
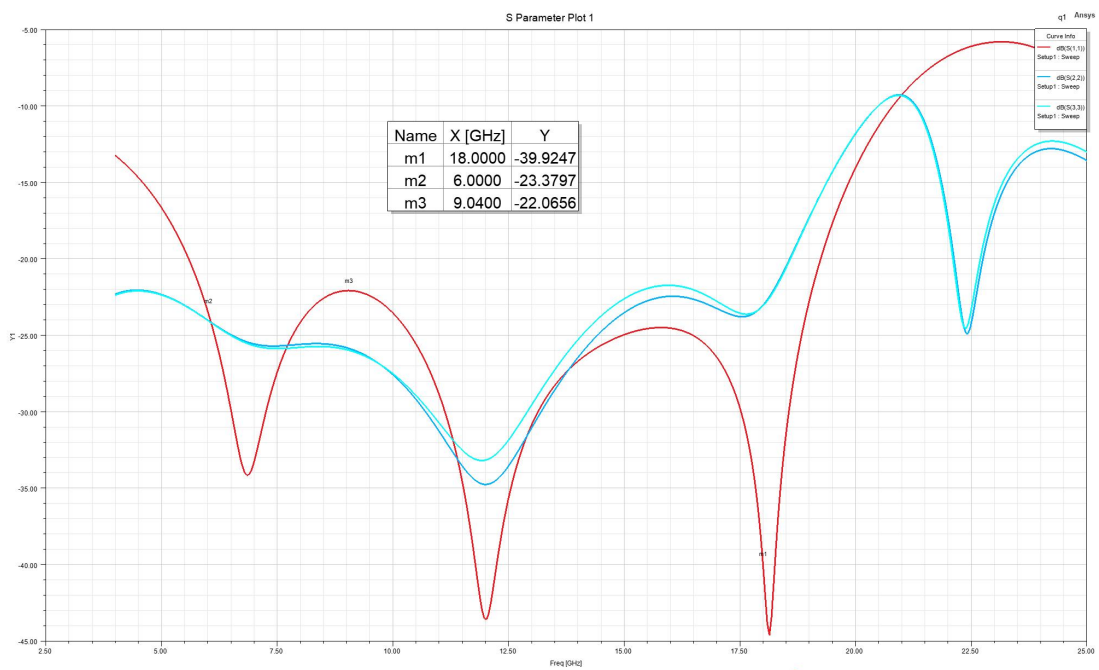


#### Yantel Corporation

Add: No.308-322,3F,Building 1,Juchuang Jingu Innovation Park,Wenyuan Road 35,Xili Street,Nanshan,Shenzhen,China

Tel: 86-755-8355-1886 Fax: 86-755-8355-2533

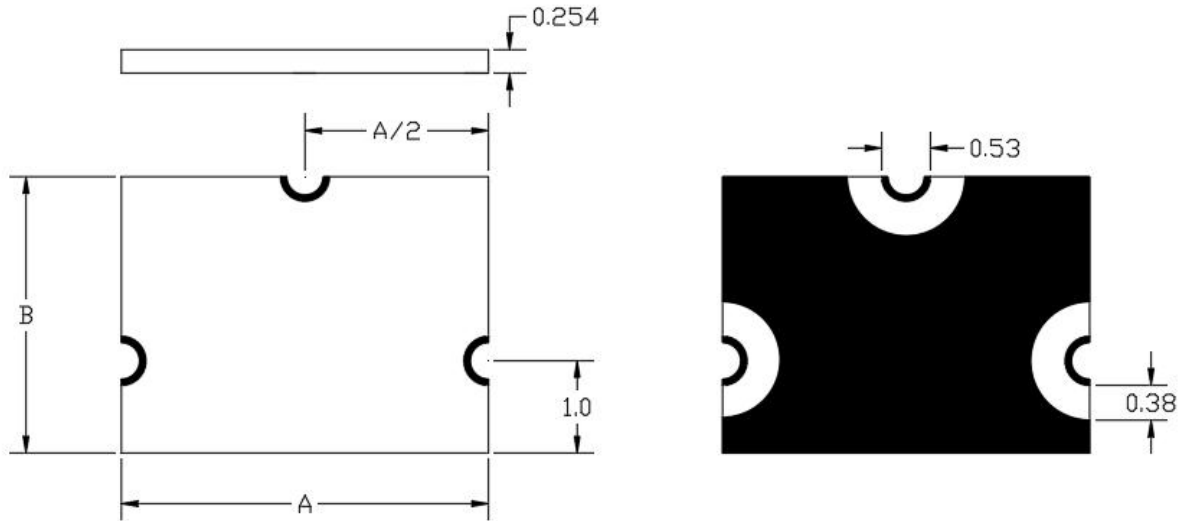
For detailed performance specs & shopping online see Yantel web site : [www.yantel-corp.com](http://www.yantel-corp.com)

**Phase Balance**

**Isolation**

**Yantel Corporation**

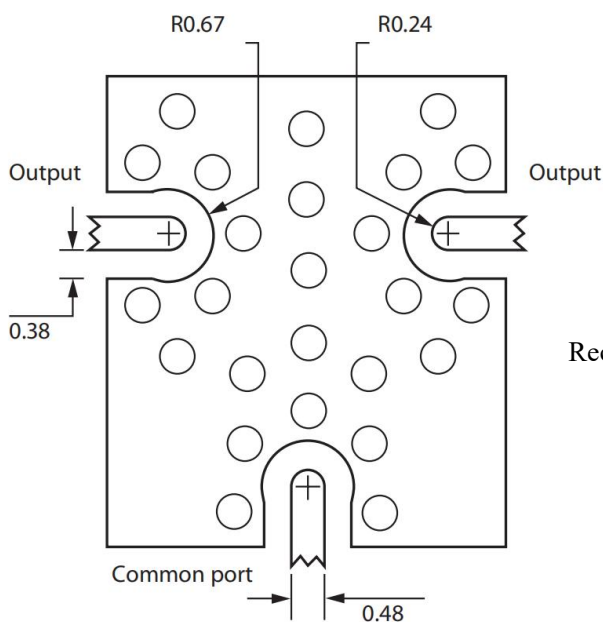
Add: No.308-322,3F,Building 1,Juchuang Jingu Innovation Park,Wenyuan Road 35,Xili Street,Nanshan,Shenzhen,China

Tel: 86-755-8355-1886 Fax: 86-755-8355-2533

 For detailed performance specs & shopping online see Yantel web site : [www.yantel-corp.com](http://www.yantel-corp.com)

**Mechanical Outline**


Unit	mm
<b>Identification size</b>	A: 4.0, B: 4.7 (A/B tolerance: $\pm 0.1\text{mm}$ )
<b>Base material</b>	Ceramics
<b>Surface process</b>	Gold plating

**Recommended PCB Layout**


Recommended PCB Board Material : 10 mil RO4350

**Yantel Corporation**

Add: No.308-322,3F,Building 1,Juchuang Jingu Innovation Park,Wenyuan Road 35,Xili Street,Nanshan,Shenzhen,China

Tel: 86-755-8355-1886 Fax: 86-755-8355-2533

 For detailed performance specs & shopping online see Yantel web site : [www.yantel-corp.com](http://www.yantel-corp.com)