

Description

Yantel's surface mounted low-pass filters have the advantages of low insertion loss and return loss, small size, high rejection, good product consistency, etc. The product adopts high-precision thick film manufacturing process, suitable for mass production, competitive cost, and has obvious cost advantages compared with thin film filters.

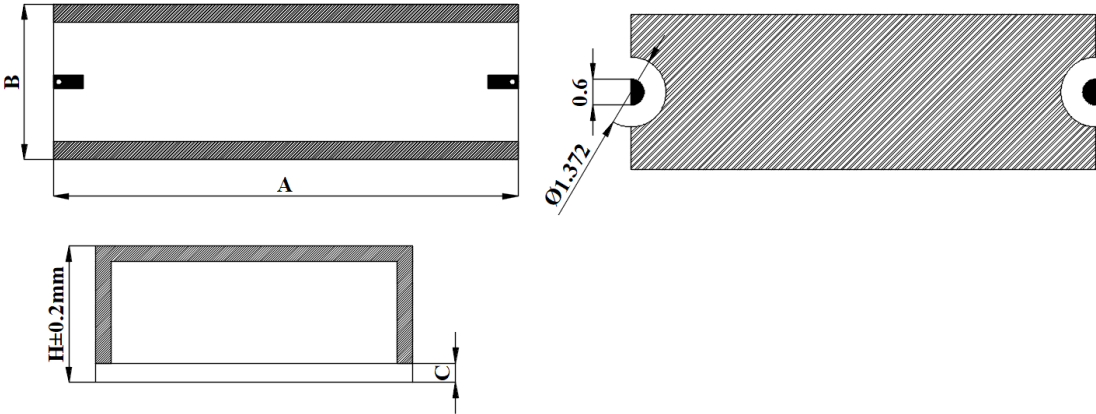
Features

- Small size
- Low loss, High rejection
- With shielding cover
- SMD Surface mounted
- Humidity level: MSL1
- Working temperature: -55 to +85°C
- Characteristic Impedance: 50Ω
- Tape package
- Competitive price and suitable for large volume use

Technical Data (Normal temperature +25°C)

No.	Parameter		Min.	Typical	Max.	Unit
1-1	Model No.		SYTFL090XE6S			
1-2	Size		5.59mm*3.56mm*2.33mm			
1-3	Cut-off Frequency f_c			9.0		GHz
1-4	Working Frequency		DC		9.0	GHz
1-5	Insertion Loss			1.5	2.0	dB
1-6	Return Loss		15	20		dB
1-7	Hight Side Rejection	@11.0-18.3GHz	45	50		dB
1-8	Power					dBm
1-9	Working temperature		-55		+85	°C
1-10	Storage temperature		-55		+125	°C
1-11	Output installation method		Surface mounted			

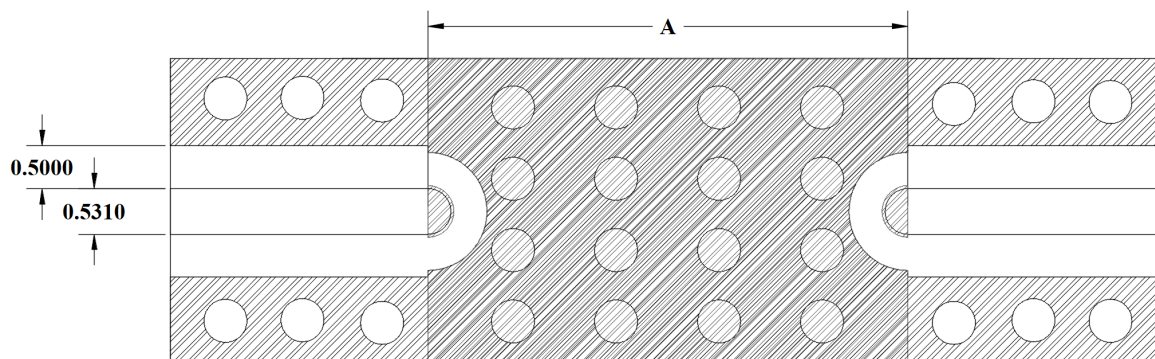
Dimensions

2-1	Dimension	See belowed picture (A、B dimension tolerance: $\pm 0.1\text{mm}$)
		
2-2	Size	A: 5.59mm B: 3.56mm C:0.381 H:2.33mm (the dimension unit in the drawing is mm, and the shape tolerance of A and B is $\pm 0.1\text{mm}$)
2-3	Substrate material	Alumina (Er=9.8)
2-4	Surface treatment	Gold plating

Version status

Version No.	Version date	File status
V4	20250523	√

Recommended assembly drawing



Remark point:

1. Testing Substrate material is Rogers4350B($\epsilon_r=3.66$), thickness is 0.254mm
2. Make sure there is enough solder on the bottom surface of the filter and ensure good grounding.
3. The maximum temperature during assembly is 250°C.

Simulation Curve:

