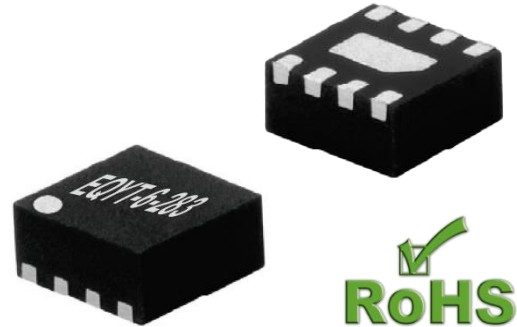
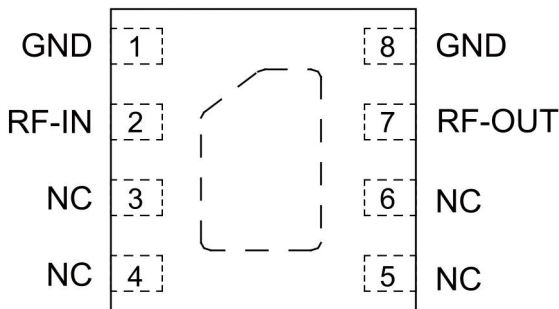


### Features

- 6.0dB Slope
- Negative Insertion Loss Slope vs. Frequency
- Wideband operation, DC to 28 GHz
- Excellent Power Handling Capability
- Small Size and simple to use (2 mm x 2 mm)
- Human Body Model (HBM): Class 2 (Pass 2000V)



TOP VIEW



### Applications

- Cellular
- PCS
- Communications
- Radar
- Defense

### Electrical specifications at 25°C

Parameter	Condition (GHz)	Min.	Typ.	Max.	Units
Frequency Range		DC		30	GHz
Insertion Loss	0.01-1	6.4	6.75	7.1	dB
	1-5	-	6.5	-	
	5-10	-	5.1	-	
	10-15	2.8	3.5	4.3	
	15-20	-	2.5	-	
	20-25	-	1.5	-	
	25-28	0.8	1.0	1.2	
VSWR	0.01-1	-	1.06	-	:1
	1-5	-	1.10	-	
	5-10	-	1.10	-	
	10-15	-	1.30	-	
	15-20	-	1.40	-	
	20-25	-	1.32	-	
	25-28	-	1.25	-	
Input RF Power		28			dBm
<b>Operating &amp; Storage Condition</b>					
Operation Temperature Range: -55°C ~ +105°C					
Storage Temperature Range: -65°C ~ +150°C					

### Yantel Corporation

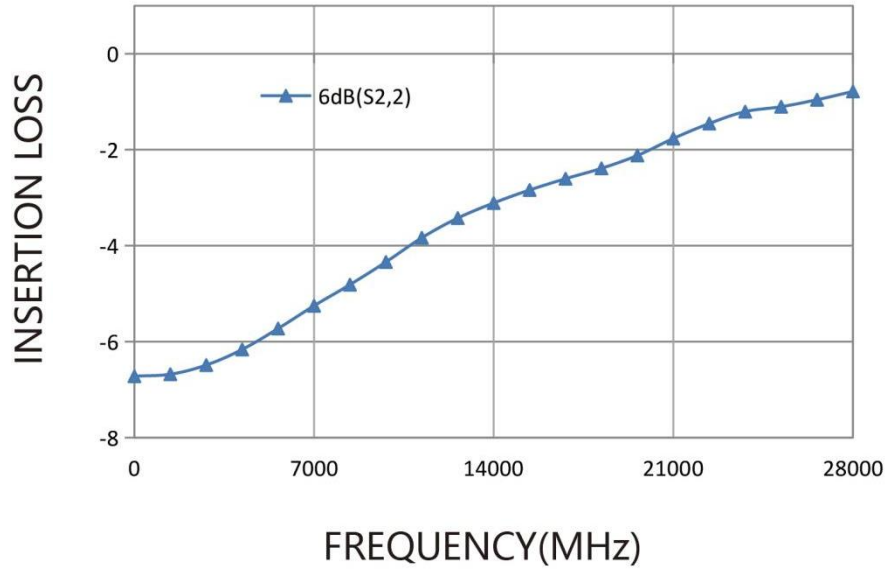
Add: No.308-322,3F,Building 1,Juchuang Jingu Innovation Park,Wenyuan Road 35,Xili Street,Nanshan,Shenzhen,China  
Tel: 86-755-8355-1886 Fax: 86-755-8355-2533

For detailed performance specs & shopping online see Yantel web site : [www.yantel-corp.com](http://www.yantel-corp.com)

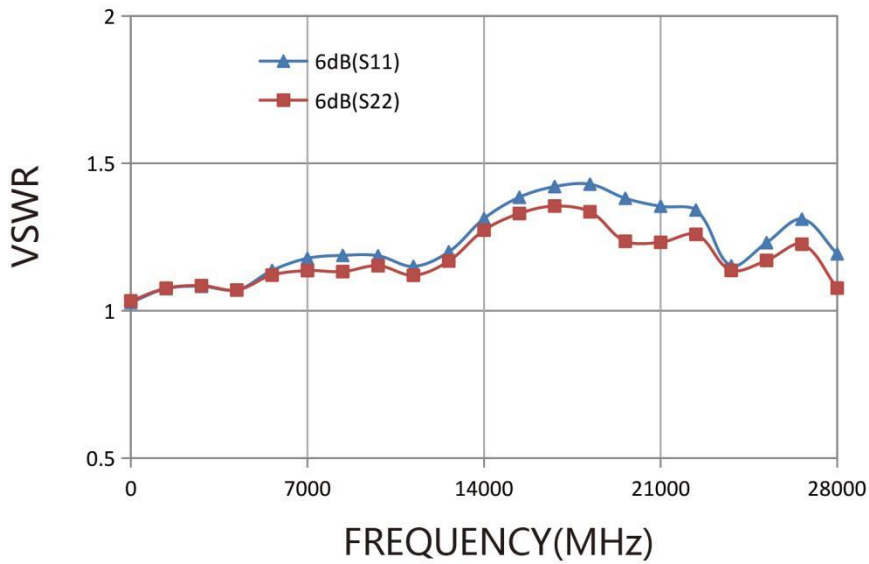
## Typical Performance Data (@25)

Frequency (MHz)	Insertion Loss(dB)	Input VSWR(:1)	Output VSWR(:1)
0.00	-6.72	1.03	1.03
1400.00	-6.68	1.07	1.08
2800.00	-6.49	1.08	1.09
4200.00	-6.16	1.07	1.07
5600.00	-5.73	1.14	1.12
7000.00	-5.25	1.18	1.14
8400.00	-4.81	1.19	1.13
9800.00	-4.34	1.19	1.15
11200.00	-3.84	1.15	1.12
12600.00	-3.43	1.20	1.17
14000.00	-3.11	1.31	1.27
15400.00	-2.84	1.39	1.33
16800.00	-2.60	1.42	1.36
18200.00	-2.39	1.43	1.34
19600.00	-2.12	1.38	1.24
21000.00	-1.77	1.35	1.23
22400.00	-1.45	1.34	1.26
23800.00	-1.21	1.15	1.14
25200.00	-1.10	1.23	1.17
26600.00	-0.96	1.31	1.23
28000.00	-0.79	1.19	1.08

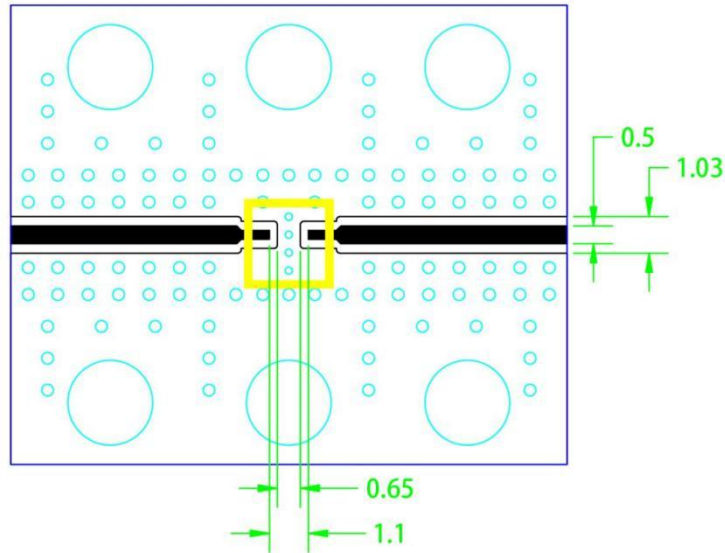
## INSERTION LOSS



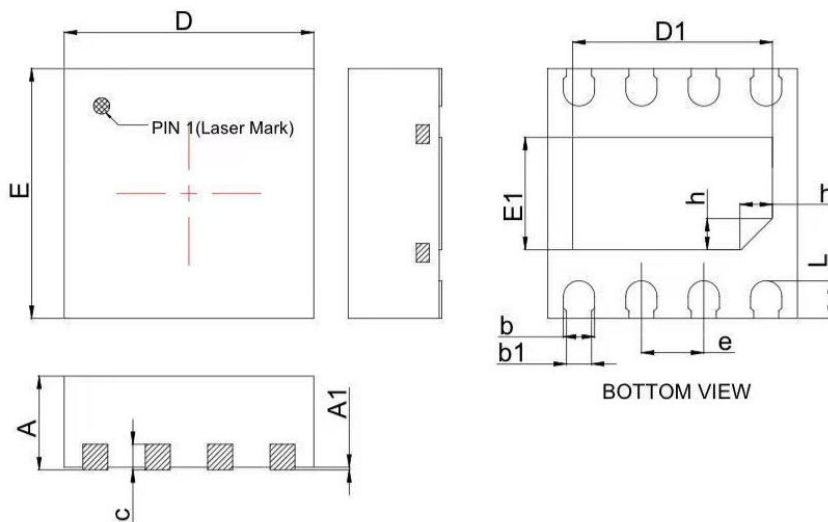
## VSWR



## PCB Land Pattern



## Outline Drawing



COMMON DIMENSION & TOLERANCE			
SYMBOL	ALL DIMENSION IN MILLIMETERS		
	MINIMUM	NOMINAL	MAXIMUM
A	0.70	0.75	0.80
A1	---	0.02	0.05
b	0.20	0.25	0.30
b1	0.20REF		
c	0.18	0.20	0.25
D	1.90	2.00	2.10
D1	1.50	1.60	1.70
e	0.50BSC		
E	1.90	2.00	2.10
E1	0.80	0.90	1.00
L	0.25	0.30	0.35
h	0.20	0.25	0.30

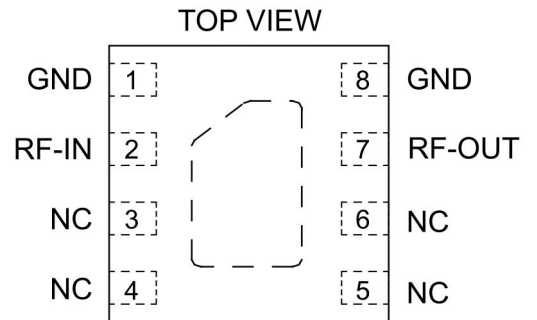
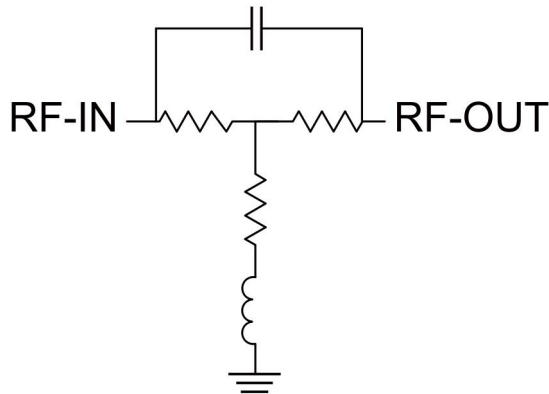
### Yantel Corporation

Add: No.308-322,3F,Building 1,Juchuang Jingu Innovation Park,Wenyuan Road 35,Xili Street,Nanshan,Shenzhen,China

Tel: 86-755-8355-1886 Fax: 86-755-8355-2533

For detailed performance specs & shopping online see Yantel web site : [www.yantel-corp.com](http://www.yantel-corp.com)

### Simplified Schematic And Pad Description



Function	Pad Number	Description
RF-IN	2	RF-Input pad
RF-OUT	7	RF-Output pad
GND	1,8 & Paddle	Ground
NC	3-6	No connection, connected to ground externally

### Characterization Test Circuit

